

Product datasheet for **AM06469SU-N**

KLHL21 Mouse Monoclonal Antibody [Clone ID: 2H4]

Product data:

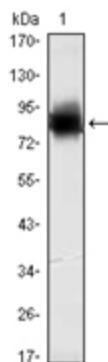
Product Type:	Primary Antibodies
Clone Name:	2H4
Applications:	ELISA, IHC, WB
Recommended Dilution:	ELISA: 1/10000. Western Blot: 1/500 - 1/2000. Immunohistochemistry on Paraffin Sections: 1/200 - 1/1000.
Reactivity:	Human
Host:	Mouse
Isotype:	IgG1
Clonality:	Monoclonal
Immunogen:	Purified recombinant fragment of Human KLHL21 expressed in E. Coli.
Specificity:	Recognizes KLHL21
Formulation:	State: Ascites State: Ascitic fluid containing 0.03% Sodium Azide.
Conjugation:	Unconjugated
Storage:	Store the antibody undiluted at 2-8°C for one month or (in aliquots) at -20°C for longer. Avoid repeated freezing and thawing.
Stability:	Shelf life: one year from despatch.
Predicted Protein Size:	66 kDa
Gene Name:	kelch like family member 21
Database Link:	Entrez Gene 9903 Human Q9UJP4
Background:	Probable substrate-specific adapter of an E3 ubiquitin-protein ligase complex which mediates the ubiquitination and subsequent proteasomal degradation of target proteins. The BCR (KLHL21) E3 ubiquitin ligase complex regulates localization of the chromosomal passenger complex (CPC) from chromosomes to the spindle midzone in anaphase and mediates the ubiquitination of AURKB. Ubiquitination of AURKB by BCR(KLHL21) E3 ubiquitin ligase complex may not lead to its degradation by the proteasome.



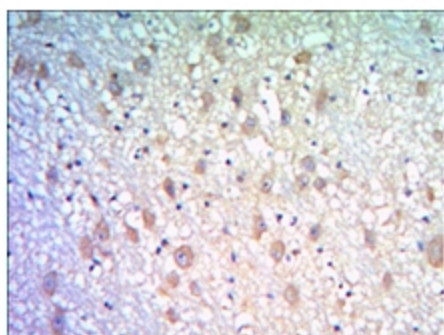
[View online »](#)

Synonyms: Kelch-like protein 21, KIAA0469

Product images:



Western blot analysis using KLHL21 antibody Cat.-No AM06469SU-N against human KLHL21 (AA: 250-597) recombinant protein (Expected MW is 64.4 kDa).



Immunohistochemical analysis of paraffin-embedded human brain tissues using KLHL21 antibody Cat.-No AM06469SU-N with DAB staining.