

Product datasheet for **AM06462SU-N**

C3IP1 (KLHL12) Mouse Monoclonal Antibody [Clone ID: 2G2]

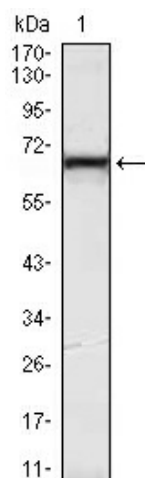
Product data:

| | |
|-------------------------|---|
| Product Type: | Primary Antibodies |
| Clone Name: | 2G2 |
| Applications: | ELISA, WB |
| Recommended Dilution: | Western Blot: 1/500 - 1/2000. ELISA: 1/10000. |
| Reactivity: | Human |
| Host: | Mouse |
| Isotype: | IgG1 |
| Clonality: | Monoclonal |
| Immunogen: | Purified recombinant fragment of human KLHL12 expressed in E. Coli. |
| Specificity: | This antibody reacts to KLHL12. |
| Formulation: | State: Ascites State: Ascitic fluid containing 0.03% sodium azide. |
| Conjugation: | Unconjugated |
| Storage: | Store the antibody undiluted at 2-8°C for one month or (in aliquots) at -20°C for longer. Avoid repeated freezing and thawing. |
| Stability: | Shelf life: one year from despatch. |
| Predicted Protein Size: | 63 kDa |
| Gene Name: | kelch like family member 12 |
| Database Link: | Entrez Gene 59349 Human Q53G59 |
| Background: | Serves as a substrate-specific adapter for the CUL3-based ubiquitin-protein E3 ligase complex. Negatively regulates the Wnt signaling pathway via the targeted ubiquitination and subsequent proteolysis of DVL3. Tissue specificity: Highly expressed in testis and at lower levels in the submandibular salivary gland. |
| Synonyms: | KLHL12, C3IP1, CUL3-interacting protein 1 |



[View online »](#)

Product images:



Western blot analysis using KLHL12 mouse mAb against HeLa (1) cell lysate.