

Product datasheet for **AM06458SU-N**

CHD3 Mouse Monoclonal Antibody [Clone ID: 2G4]

Product data:

Product Type:	Primary Antibodies
Clone Name:	2G4
Applications:	ELISA, FC, IF, IHC, WB
Recommended Dilution:	Western Blot: 1/500 - 1/2000. Immunohistochemistry on paraffin sections: 1/200 - 1/1000. Immunofluorescence: 1/200 - 1/1000. Flow cytometry: 1/200 - 1/400. ELISA: 1/10000.
Reactivity:	Human, Mouse
Host:	Mouse
Isotype:	IgG1
Clonality:	Monoclonal
Immunogen:	Purified recombinant fragment of human CHD3 expressed in E. Coli.
Specificity:	This antibody reacts to CHD3.
Formulation:	State: Ascites State: Ascitic fluid containing 0.03% sodium azide.
Conjugation:	Unconjugated
Storage:	Store the antibody undiluted at 2-8°C for one month or (in aliquots) at -20°C for longer. Avoid repeated freezing and thawing.
Stability:	Shelf life: one year from despatch.
Predicted Protein Size:	226 kDa
Gene Name:	chromodomain helicase DNA binding protein 3
Database Link:	Entrez Gene 1107 Human Q12873



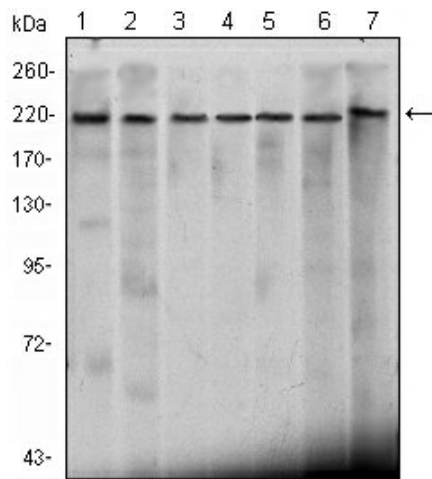
[View online »](#)

Background:

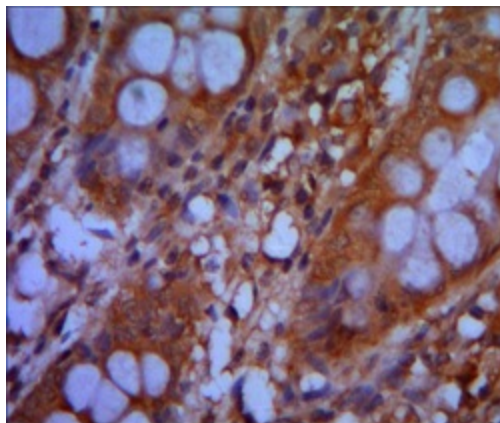
This gene encodes a member of the CHD family of proteins which are characterized by the presence of chromo (chromatin organization modifier) domains and SNF2-related helicase/ATPase domains. This protein is one of the components of a histone deacetylase complex referred to as the Mi-2/NuRD complex which participates in the remodeling of chromatin by deacetylating histones. Chromatin remodeling is essential for many processes including transcription. Autoantibodies against this protein are found in a subset of patients with dermatomyositis. Three alternatively spliced transcripts encoding different isoforms have been described.

Synonyms:

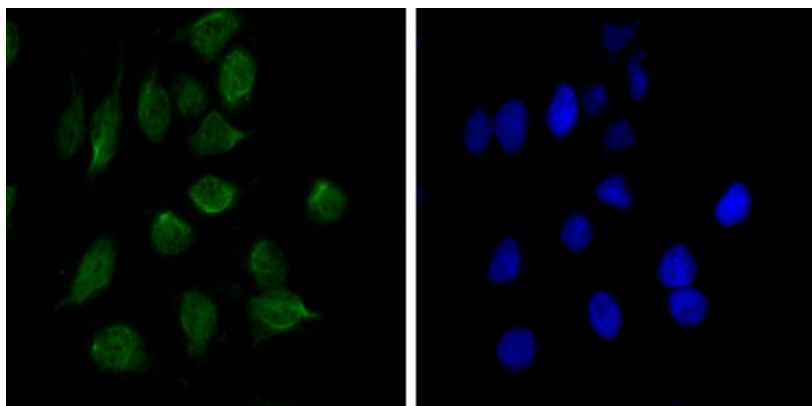
CHD-3, Mi2-alpha, Zinc finger helicase, hZFH

Product images:


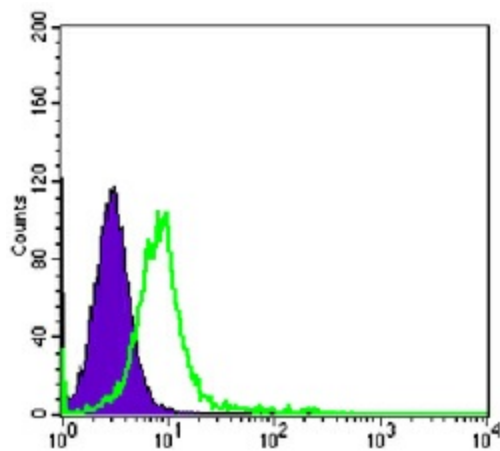
Western blot analysis using CHD3 mouse mAb against HeLa (1), K562 (2), Jurkat (3), NTERA-2 (4), HEK293 (5), Raji (6) cell lysate and mouse brain (7) tissue lysate.



Immunohistochemical analysis of paraffin-embedded colon cancer tissues using CHD3 mouse mAb with DAB staining.



Immunofluorescence analysis of HeLa cells using CHD3 mouse mAb (green). Blue: DRAQ5 fluorescent DNA dye.



Flow cytometric analysis of K562 cells using CHD3 mouse mAb (green) and negative control (purple).