

Product datasheet for **AM06456SU-N**

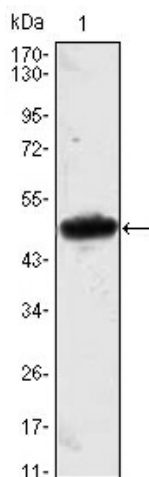
MESP1 Mouse Monoclonal Antibody [Clone ID: 1A3]

Product data:

Product Type:	Primary Antibodies
Clone Name:	1A3
Applications:	ELISA, WB
Recommended Dilution:	Western Blot: 1/500 - 1/2000. ELISA: 1/10000.
Reactivity:	Human
Host:	Mouse
Isotype:	IgG1
Clonality:	Monoclonal
Immunogen:	Purified recombinant fragment of human MESP1 expressed in E. Coli.
Specificity:	This antibody reacts to MESP1.
Formulation:	State: Ascites State: Ascitic fluid containing 0.03% sodium azide.
Conjugation:	Unconjugated
Storage:	Store the antibody undiluted at 2-8°C for one month or (in aliquots) at -20°C for longer. Avoid repeated freezing and thawing.
Stability:	Shelf life: one year from despatch.
Predicted Protein Size:	28,5 kDa
Database Link:	Entrez Gene 55897 Human Q9BRJ9
Background:	Mesp1 (mesoderm posterior 1) is a basic helix-loop-helix-type transcription factor, which along with its related proteins, has an essential role in both segmentation and rostro-caudal patterning of somites in the anterior pre-somitic mesoderm. Mesp1 is expressed in many of the precursors of the cardiovascular system and is known to play a role in the process of cardiac morphogenesis.
Synonyms:	Mesoderm posterior protein 1



[View online »](#)

Product images:

Western blot analysis using MESP1 mAb against MESP1 (AA: 1-200)-hlgGfc transfected HEK293 cell lysate.