

Product datasheet for **AM06451SU-N**

NM23A (NME1) Mouse Monoclonal Antibody [Clone ID: 4B2]

Product data:

| | |
|-------------------------|--|
| Product Type: | Primary Antibodies |
| Clone Name: | 4B2 |
| Applications: | ELISA, FC, IF, IHC, WB |
| Recommended Dilution: | Western Blot: 1/500 - 1/2000. Immunohistochemistry on paraffin sections: 1/200 - 1/1000. Immunofluorescence: 1/200 - 1/1000. Flow cytometry: 1/200 - 1/400. ELISA: 1/10000. |
| Reactivity: | Human |
| Host: | Mouse |
| Isotype: | IgG1 |
| Clonality: | Monoclonal |
| Immunogen: | Purified recombinant fragment of human NME1 expressed in E. Coli. |
| Specificity: | This antibody reacts to NME1. |
| Formulation: | State: Ascites State: Ascitic fluid containing 0.03% sodium azide. |
| Conjugation: | Unconjugated |
| Storage: | Store the antibody undiluted at 2-8°C for one month or (in aliquots) at -20°C for longer. Avoid repeated freezing and thawing. |
| Stability: | Shelf life: one year from despatch. |
| Predicted Protein Size: | 17 kDa |
| Gene Name: | NME/NM23 nucleoside diphosphate kinase 1 |
| Database Link: | Entrez Gene 4830 Human P15531 |



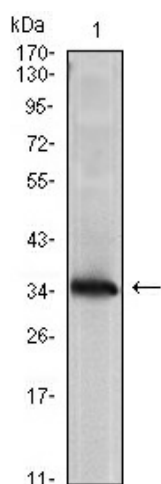
[View online »](#)

Background:

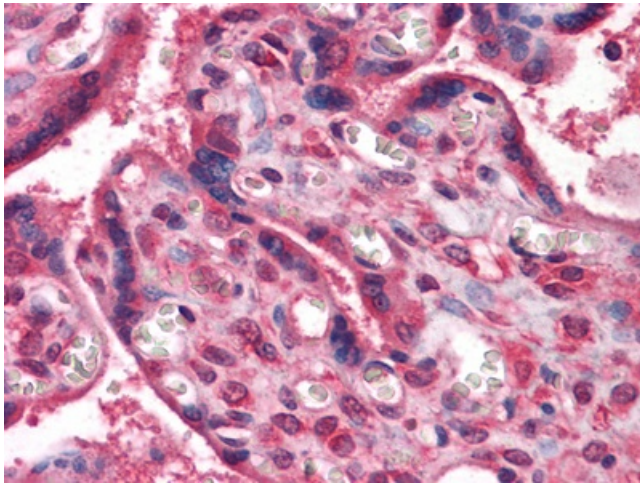
non-metastatic cells 1,protein,with a nm23 nucleoside diphosphate kinase gene family,involved in the phosphorylation of nucleoside diphosphates,with a reduced expression in tumor progression to the metastatic phenotype,mutated in aggressive neuroblastoma,expressed in lung carcinoma cell lines not in normal lung,pyrimidine biosynthetic pathway. Involved in cell proliferation, differentiation and development, signal transduction, G protein-coupled receptor endocytosis, and gene expression. Required for neural development including neural patterning and cell fate determination. Has tumor metastasis-suppressive capacity.Tissue specificity: Isoform 1 is expressed in heart, brain, placenta, lung, liver, skeletal muscle, pancreas, spleen and thymus. Expressed in lung carcinoma cell lines but not in normal lung tissues. Isoform 2 is ubiquitously expressed and its expression is also related to tumor differentiation. Isoform 3 is ubiquitously expressed.

Synonyms:

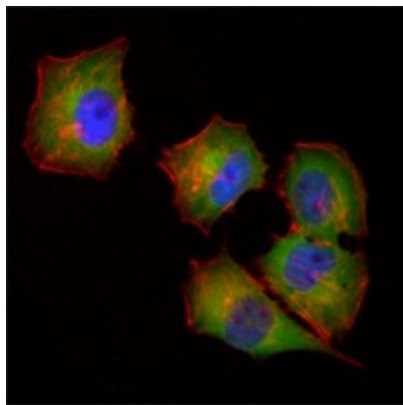
NME1, NDPKA, NM23, nm23-H1, GAAD

Product images:

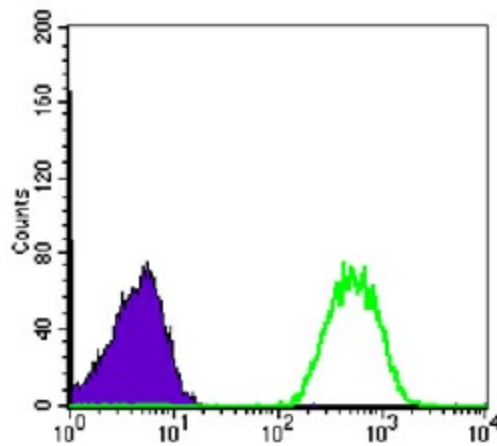
Western blot analysis using NME1 mAb against NME1 (AA: 27-177)-hlgGfc transfected HEK293 cell lysate.



Immunohistochemical analysis of paraffin-embedded human Placenta tissues using anti-NME1 mouse mAb



Immunofluorescence analysis of HeLa cells using NME1 mouse mAb (green). Red: Actin filaments have been labeled with Alexa Fluor-555 phalloidin. Blue: DRAQ5 fluorescent DNA dye.



Flow cytometric analysis of Jurkat cells using NME1 mouse mAb (green) and negative control (purple).