

Product datasheet for **AM06446SU-N**

PWWP3A Mouse Monoclonal Antibody [Clone ID: 4G10]

Product data:

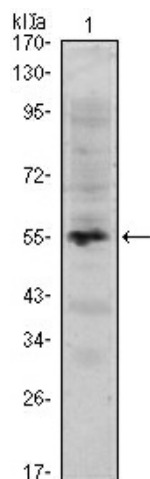
Product Type:	Primary Antibodies
Clone Name:	4G10
Applications:	ELISA, IHC, WB
Recommended Dilution:	Western Blot: 1/500 - 1/2000. Immunohistochemistry on paraffin sections 1/200 - 1/1000. ELISA: 1/10000.
Reactivity:	Human
Host:	Mouse
Isotype:	IgG1
Clonality:	Monoclonal
Immunogen:	Purified recombinant fragment of human MUM1 expressed in E. Coli.
Specificity:	This antibody reacts to MUM1.
Formulation:	State: Ascites State: Ascitic fluid containing 0.03% sodium azide.
Concentration:	lot specific
Conjugation:	Unconjugated
Storage:	Store the antibody undiluted at 2-8°C for one month or (in aliquots) at -20°C for longer. Avoid repeated freezing and thawing.
Stability:	Shelf life: one year from despatch.
Predicted Protein Size:	78.6 kDa
Gene Name:	melanoma associated antigen (mutated) 1
Database Link:	Entrez Gene 84939 Human Q2TAK8
Background:	Mutated melanoma-associated antigen 1 (MUM1) is a 78.6 kDa protein encoded by the MUM1 gene. MUM1 is expressed in a subset of B cells in the light zone of the germinal center, plasma cells, activated T cells and a wide spectrum of related hematolymphoid neoplasms. Antibodies to MUM1 are useful in the sub classification of lymphoid malignancies.



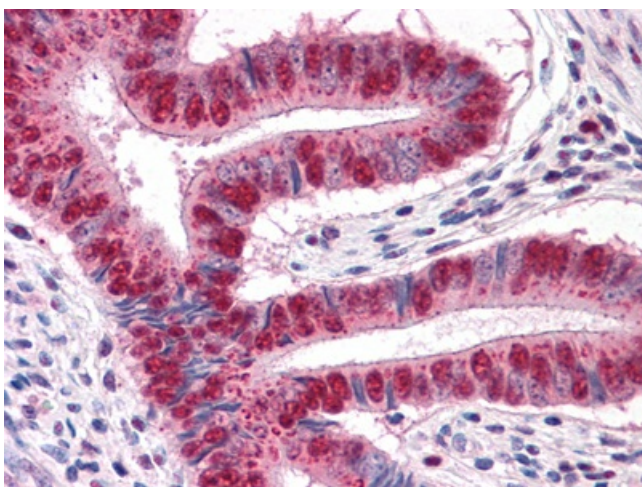
[View online »](#)

Synonyms: EXPAND1, MUM-1, Protein expandere

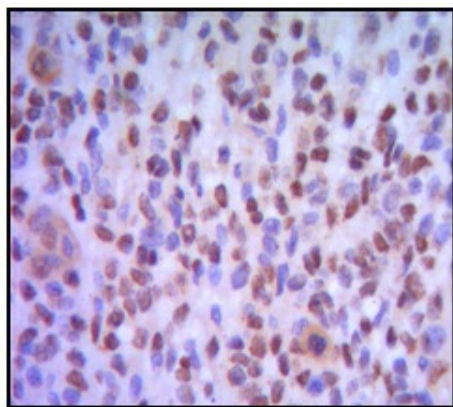
Product images:



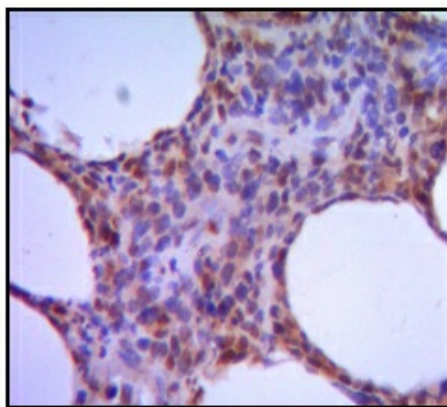
Western blot analysis using MUM1 mAb against human MUM1 (AA: 590-711) recombinant protein. (Expected MW is 39.8 kDa)



Immunohistochemical analysis of paraffin-embedded human Uterus tissues using MUM1 mouse mAb



A



B

Immunohistochemical analysis of paraffin-embedded human melanoma (A), non-Hodgkin`s lymphoma (B), using MUM1 mouse mAb with DAB staining.