

Product datasheet for **AM06445SU-N**

GATA1 Mouse Monoclonal Antibody [Clone ID: 4F5]

Product data:

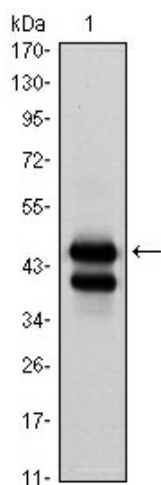
Product Type:	Primary Antibodies
Clone Name:	4F5
Applications:	ELISA, IF, IHC, WB
Recommended Dilution:	Western Blot: 1/500 - 1/2000. Immunohistochemistry on paraffin sections: 1/200 - 1/1000. Immunofluorescence: 1/200 - 1/1000. ELISA: 1/10000.
Reactivity:	Human
Host:	Mouse
Isotype:	IgG2b
Clonality:	Monoclonal
Immunogen:	Purified recombinant fragment of human GATA1 expressed in E. Coli.
Specificity:	This antibody reacts to GATA1.
Formulation:	State: Ascites State: Ascitic fluid containing 0.03% sodium azide.
Conjugation:	Unconjugated
Storage:	Store the antibody undiluted at 2-8°C for one month or (in aliquots) at -20°C for longer. Avoid repeated freezing and thawing.
Stability:	Shelf life: one year from despatch.
Predicted Protein Size:	42,7 kDa
Gene Name:	GATA binding protein 1
Database Link:	Entrez Gene 2623 Human P15976
Background:	erythroid specific transcription factor,GATA sequence binding protein (same as EryF1,NF-E1,EF-1,EF gamma-a,GF1),expressed in RBC,mast cell,megakaryocyte,hematopoietic progenitor cell,testis,associated with a special class of nuclear bodies,activated by erythropoietin,inactivated by coactivation of DEATH receptors (TNFRSF6) mediated caspase cleavage Tissue specificity: Erythrocytes



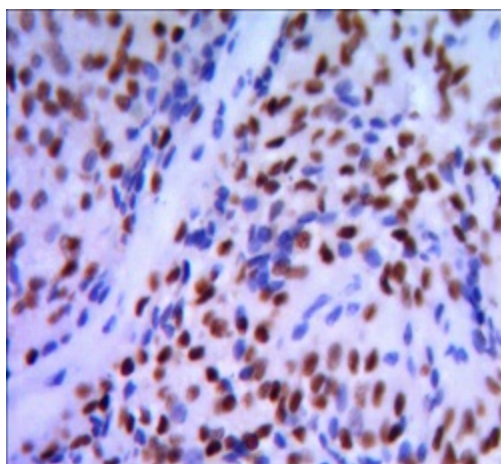
[View online »](#)

Synonyms: GATA-1, ERYF1, GF1, Erythroid transcription factor, Eryf1, GATA-binding factor 1, GATA-1, GF-1, NF-E1 DNA-binding protein

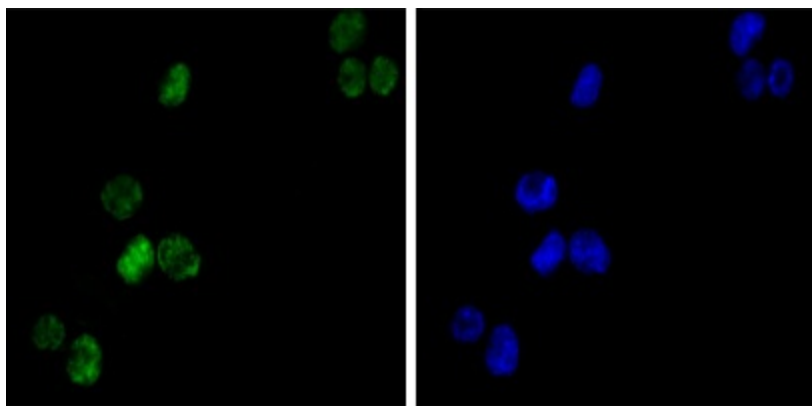
Product images:



Western blot analysis using GATA1 mouse mAb against K562 (1) cell lysate.



Immunohistochemical analysis of paraffin-embedded pancreatic cancer, using GATA1 mouse mAb with DAB staining.



Immunofluorescence analysis of K562 (left) cells using GATA1 mouse mAb (green). Blue: DRAQ5 fluorescent DNA dye.