

Product datasheet for **AM06440SU-N**

N Cadherin (CDH2) Mouse Monoclonal Antibody [Clone ID: 5D5]

Product data:

Product Type:	Primary Antibodies
Clone Name:	5D5
Applications:	ELISA, FC, IF, IHC, WB
Recommended Dilution:	ELISA: 1/10000. Western Blot: 1/500 - 1/2000. Flow cytometry: 1/200 - 1/400. Immunofluorescence: 1/200 - 1/1000. Immunohistochemistry on Paraffin Sections: 1/200 - 1/1000.
Reactivity:	Human, Mouse, Rat
Host:	Mouse
Isotype:	IgG1
Clonality:	Monoclonal
Immunogen:	Purified recombinant fragment of Human CDH2 expressed in E. Coli.
Specificity:	This antibody recognizes Cadherin-2 (CDH2).
Formulation:	State: Ascites State: Ascitic fluid containing 0.03% Sodium Azide.
Conjugation:	Unconjugated
Storage:	Store the antibody undiluted at 2-8°C for one month or (in aliquots) at -20°C for longer. Avoid repeated freezing and thawing.
Stability:	Shelf life: one year from despatch.
Predicted Protein Size:	99.8 kDa
Gene Name:	cadherin 2
Database Link:	Entrez Gene 1000 Human P19022



[View online »](#)

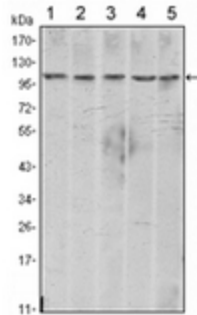
Background:

Cadherins comprise a family of Ca²⁺-dependent adhesion molecules that function to mediate cell-cell binding critical to the maintenance of tissue structure and morphogenesis. The classical cadherins, E-, N- and P-cadherin, consist of large extracellular domains characterized by a series of five homologous NH₂ terminal repeats. The most distal of these cadherins is thought to be responsible for binding specificity, transmembrane domains and carboxy terminal intracellular domains.

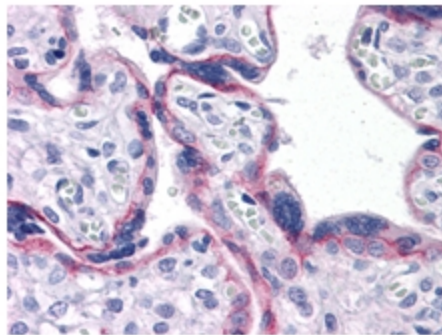
Synonyms:

CDH2, CDHN, NCAD, Neural cadherin, CDw325, Cadherin N, N-Cadherin

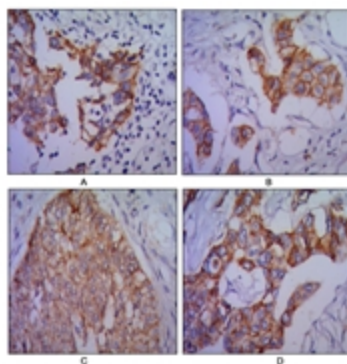
Product images:



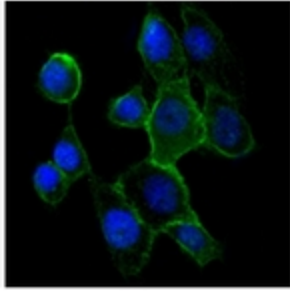
Western blot analysis using CDH2 antibody Cat.-No AM06440SU-N against A431 (1), NIH/3T3 (2), HeLa (3), C6 (4) and LNCap (5) cell lysate.



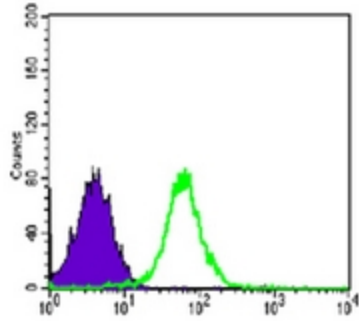
Paraffin-Embedded Human Placenta tissues stained with CDH2 antibody Cat.-No AM06440SU-N



Immunohistochemical analysis of paraffin-embedded human lung cancer (A), colon cancer (B), ovarian cancer (C) and mammary cancer (D), using CDH2 antibody Cat.-No AM06440SU-N with DAB staining.



Immunofluorescence analysis of A431 cells using CDH2 antibody Cat.-No AM06440SU-N (green). Blue: DRAQ5 fluorescent DNA dye.



Flow cytometric analysis of PC-2 cells using CDH2 antibody Cat.-No AM06440SU-N (green) and negative control (purple).