

Product datasheet for **AM06435SU-N**

CD3E Mouse Monoclonal Antibody [Clone ID: 4E2]

Product data:

Product Type:	Primary Antibodies
Clone Name:	4E2
Applications:	ELISA, FC, WB
Recommended Dilution:	Western Blot: 1/500 - 1/2000. Flow cytometry: 1/200 - 1/400. ELISA: 1/10000.
Reactivity:	Human
Host:	Mouse
Isotype:	IgG1
Clonality:	Monoclonal
Immunogen:	Purified recombinant fragment of CD3E expressed in E. Coli.
Specificity:	This antibody reacts to CD3E.
Formulation:	State: Ascites State: Ascitic fluid containing 0.03% sodium azide.
Conjugation:	Unconjugated
Storage:	Store the antibody undiluted at 2-8°C for one month or (in aliquots) at -20°C for longer. Avoid repeated freezing and thawing.
Stability:	Shelf life: one year from despatch.
Predicted Protein Size:	23 kDa
Gene Name:	CD3e molecule
Database Link:	Entrez Gene 916 Human P07766



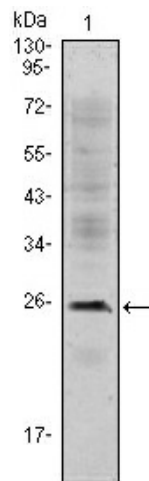
[View online »](#)

Background:

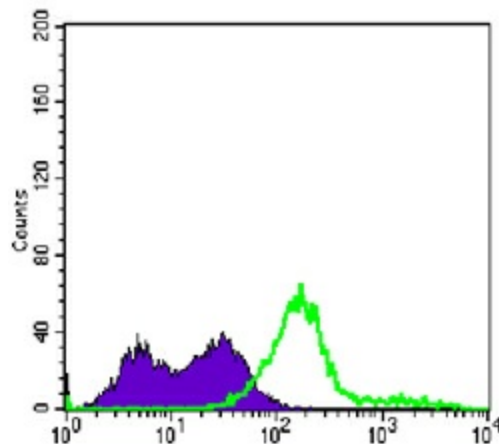
The protein encoded by this gene is the CD3-epsilon polypeptide, which together with CD3-gamma, -delta and -zeta, and the T-cell receptor alpha/beta and gamma/delta heterodimers, forms the T-cell receptor-CD3 complex. This complex plays an important role in coupling antigen recognition to several intracellular signal-transduction pathways. The genes encoding the epsilon, gamma and delta polypeptides are located in the same cluster on chromosome 11. The epsilon polypeptide plays an essential role in T-cell development. Defects in this gene cause immunodeficiency. This gene has also been linked to a susceptibility to type I diabetes in women.

Synonyms:

T3/Leu-4

Product images:

Western blot analysis using CD3E mouse mAb against Jurkat (1) cell lysate.



Flow cytometric analysis of Jurkat cells using CD3E mouse mAb (green) and negative control (purple).