

## Product datasheet for **AM06433SU-N**

### **CLOCK Mouse Monoclonal Antibody [Clone ID: 8F7]**

#### **Product data:**

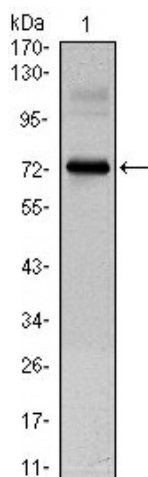
Product Type:	Primary Antibodies
Clone Name:	8F7
Applications:	ELISA, IF, WB
Recommended Dilution:	<b>Western Blot:</b> 1/500 - 1/2000. <b>Immunofluorescence:</b> 1/200 - 1/1000. <b>ELISA:</b> 1/10000.
Reactivity:	Human
Host:	Mouse
Isotype:	IgG1
Clonality:	Monoclonal
Immunogen:	Purified recombinant fragment of human CLOCK expressed in E. Coli.
Specificity:	This antibody reacts to CLOCK.
Formulation:	State: Ascites State: Ascitic fluid containing 0.03% sodium azide.
Conjugation:	Unconjugated
Storage:	Store the antibody undiluted at 2-8°C for one month or (in aliquots) at -20°C for longer. Avoid repeated freezing and thawing.
Stability:	Shelf life: one year from despatch.
Predicted Protein Size:	95 kDa
Gene Name:	clock circadian regulator
Database Link:	<a href="#">Entrez Gene 9575 Human O15516</a>
Background:	This gene encodes a protein that belongs to the basic helix-loop-helix (bHLH) family of transcription factors. Polymorphisms within the encoded protein have been associated with circadian rhythm sleep disorders. A similar protein in mice is a circadian regulator that acts as a transcription factor and forms a heterodimer with aryl hydrocarbon receptor nuclear translocator-like to activate transcription of mouse period 1.



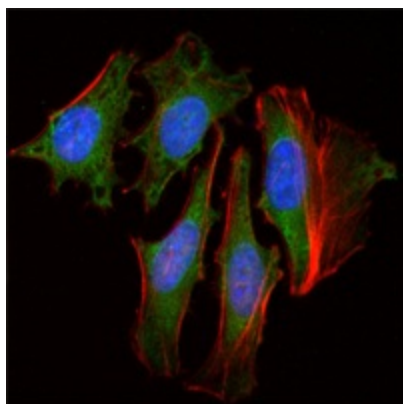
[View online »](#)

Synonyms: KIAA0334, BHLHE8

### Product images:



Western blot analysis using CLOCK mouse mAb against CLOCK (AA: 200-465)-hIgGfC transfected HEK293 cell lysate.



Immunofluorescence analysis of HeLa cells using CLOCK mouse mAb (green). Red: Actin filaments have been labeled with Alexa Fluor-555 phalloidin. Blue: DRAQ5 fluorescent DNA dye.