

Product datasheet for **AM06432SU-N**

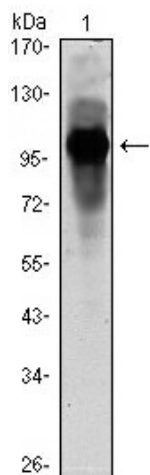
BMAL1 (ARNTL) Mouse Monoclonal Antibody [Clone ID: 1C5]

Product data:

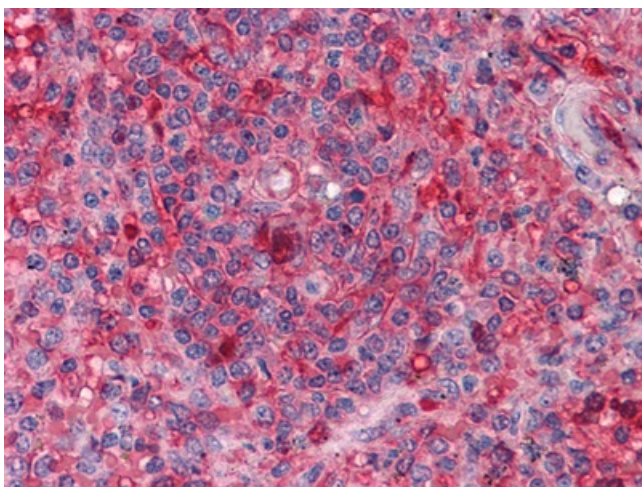
Product Type:	Primary Antibodies
Clone Name:	1C5
Applications:	ELISA, IHC, WB
Recommended Dilution:	Western Blot: 1/500 - 1/2000. Immunohistochemistry on paraffin sections 1/200 - 1/1000. ELISA: 1/10000.
Reactivity:	Human
Host:	Mouse
Isotype:	IgG1
Clonality:	Monoclonal
Immunogen:	Purified recombinant fragment of human ARNTL expressed in E. Coli.
Specificity:	This antibody reacts to ARNTL.
Formulation:	State: Ascites State: Ascitic fluid containing 0.03% sodium azide.
Conjugation:	Unconjugated
Storage:	Store the antibody undiluted at 2-8°C for one month or (in aliquots) at -20°C for longer. Avoid repeated freezing and thawing.
Stability:	Shelf life: one year from despatch.
Predicted Protein Size:	68.7 kDa
Gene Name:	aryl hydrocarbon receptor nuclear translocator like
Database Link:	Entrez Gene 406 Human O00327
Background:	The protein encoded by this gene is a basic helix-loop-helix protein that forms a heterodimer with CLOCK. This complex binds an E-box upstream of the PER1 gene, activating this gene and possibly other circadian rhythm-associated genes. Three transcript variants encoding two different isoforms have been found for this gene.
Synonyms:	BHLHE5, MOP3, PASD3, bHLHe5, bHLH-PAS protein JAP3



[View online »](#)

Product images:

Western blot analysis using ARNTL mouse mAb against ARBTL (AA: 1-310)-hIgGfc transfected HEK293 cell lysate.



Immunohistochemical analysis of paraffin-embedded human Spleen tissues using anti-ARNTL mouse mAb