

Product datasheet for **AM06427SU-N**

EGR1 Mouse Monoclonal Antibody [Clone ID: 8A6]

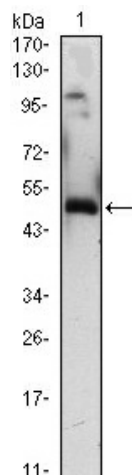
Product data:

Product Type:	Primary Antibodies
Clone Name:	8A6
Applications:	ELISA, WB
Recommended Dilution:	Western Blot: 1/500 - 1/2000. ELISA: 1/10000.
Reactivity:	Human
Host:	Mouse
Isotype:	IgG1
Clonality:	Monoclonal
Immunogen:	Purified recombinant fragment of human EGR1(aa282-433) expressed in E. Coli.
Specificity:	This antibody reacts to EGR1.
Formulation:	State: Ascites State: Ascitic fluid containing 0.03% sodium azide.
Conjugation:	Unconjugated
Storage:	Store the antibody undiluted at 2-8°C for one month or (in aliquots) at -20°C for longer. Avoid repeated freezing and thawing.
Stability:	Shelf life: one year from despatch.
Predicted Protein Size:	57,5 kDa
Gene Name:	early growth response 1
Database Link:	Entrez Gene 1958 Human P18146
Background:	The protein encoded by this gene belongs to the EGR family of C2H2-type zinc-finger proteins. It is a nuclear protein and functions as a transcriptional regulator. The products of target genes it activates are required for differentiation and mitogenesis. Studies suggest this is a cancer suppressor gene.
Synonyms:	Early growth response protein 1, EGR-1, Zif268, Zif-268, NGFI-A, AT225, ETR103, KROX-24



[View online »](#)

Product images:



Western blot analysis using EGR1 mouse mAb against EGR1 (AA: 282-433)-hIgGFc transfected HEK293 (1) cell lysate.