

Product datasheet for **AM06424SU-N**

IRE1 (ERN1) (282-433) Mouse Monoclonal Antibody [Clone ID: 9F2]

Product data:

| | |
|-------------------------|--|
| Product Type: | Primary Antibodies |
| Clone Name: | 9F2 |
| Applications: | ELISA, IHC, WB |
| Recommended Dilution: | ELISA: 1/10000 Western blot: 1/500-1/2000. Immunofluorescence: 1/200-1/1000. Immunohistochemistry on Paraffin Sections: 1/200-1/1000. |
| Reactivity: | Human |
| Host: | Mouse |
| Isotype: | IgG1 |
| Clonality: | Monoclonal |
| Immunogen: | Purified recombinant fragment of Human ERN1 (aa282-433) expressed in E. Coli. |
| Specificity: | Recognizes ER To Nucleus Signaling 1 (IRE1/ERN1). |
| Formulation: | State: Ascites State: Ascitic fluid containing 0.03% Sodium Azide. |
| Conjugation: | Unconjugated |
| Storage: | Store the antibody undiluted at 2-8°C for one month or (in aliquots) at -20°C for longer. Avoid repeated freezing and thawing. |
| Stability: | Shelf life: one year from despatch. |
| Predicted Protein Size: | 109 kDa |
| Gene Name: | endoplasmic reticulum to nucleus signaling 1 |
| Database Link: | Entrez Gene 2081 Human O75460 |



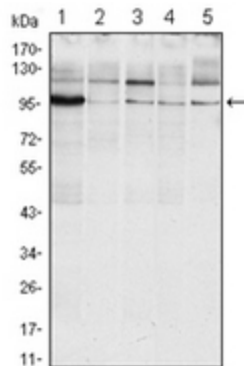
[View online »](#)

Background:

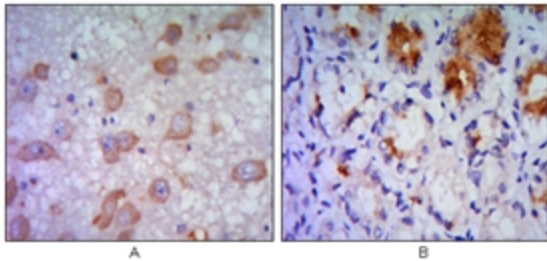
IRE1p is a 108kDa serine-threonine kinase/endoribonuclease also known as ERN1. It is an endoplasmic reticulum (ER) transmembrane protein, normally bound to the ER molecular chaperones GRP78 and GRP94. At times of ER stress, due to accumulation of unfolded proteins, IRE1p becomes dissociated from the chaperones, which allows it to activate the unfolded protein transcriptional response (UPR). In the mammalian genome, there are two homologs Ire1alpha and Ire1beta. Ire1alpha is expressed in all cells and tissues, Ire1beta expression is primarily restricted to intestinal epithelial cells.

Synonyms:

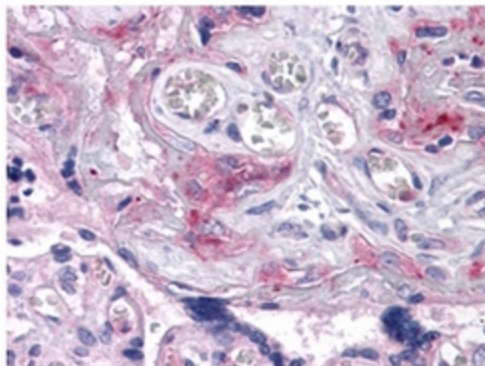
Inositol-requiring protein 1, IRE1p, Ire1-alpha, IRE1a

Product images:


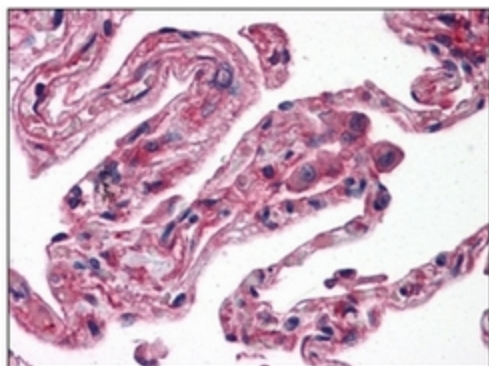
Western blot analysis using ERN1 antibody Cat.-No AM06424SU-N against Raji (Lane 1), A431 (Lane 2), Jurkat (Lane 3), Hela (Lane 4) and HEK293 (Lane 5) cell lysate.



Immunohistochemical analysis of paraffin-embedded human brain tissue (A) and stomach tissue (B), showing cytoplasmic localization using ERN1 antibody Cat.-No AM06424SU-N with DAB staining.



Immunohistochemical analysis of paraffin-embedded human Placenta tissues using ERN1 antibody Cat.-No AM06424SU-N



Immunohistochemical analysis of paraffin-embedded human Lung tissues using ERN1 antibody Cat.-No AM06424SU-N