

## Product datasheet for **AM06423SU-N**

### **A1BG Mouse Monoclonal Antibody [Clone ID: 4B5]**

#### **Product data:**

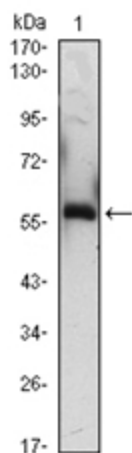
Product Type:	Primary Antibodies
Clone Name:	4B5
Applications:	ELISA, IHC, WB
Recommended Dilution:	<b>ELISA:</b> 1/10000. <b>Western Blot:</b> 1/500 - 1/2000. <b>Immunohistochemistry on Paraffin Sections:</b> 1/200 - 1/1000.
Reactivity:	Human
Host:	Mouse
Isotype:	IgG1
Clonality:	Monoclonal
Immunogen:	Purified recombinant fragment of human A1BG expressed in E. Coli.
Specificity:	Recognizes Alpha-1B-glycoprotein / A1BG
Formulation:	State: Ascites State: Ascitic fluid containing 0.03% Sodium Azide.
Conjugation:	Unconjugated
Storage:	Store the antibody undiluted at 2-8°C for one month or (in aliquots) at -20°C for longer. Avoid repeated freezing and thawing.
Stability:	Shelf life: one year from despatch.
Predicted Protein Size:	54 kDa
Gene Name:	alpha-1-B glycoprotein
Database Link:	<a href="#">Entrez Gene 1 Human P04217</a>
Background:	A1BG is a plasma glycoprotein of unknown function. It shows sequence similarity to the variable regions of some immunoglobulin supergene family member proteins. A1BG was recently shown to bind cysteine rich secretory protein 3 (CRISP 3) with high affinity, and it has been suggested that A1BG protects against the potentially toxic effects of CRISP 3 in the circulation. The protein shows sequence similarity to the variable regions of some immunoglobulin supergene family member proteins.



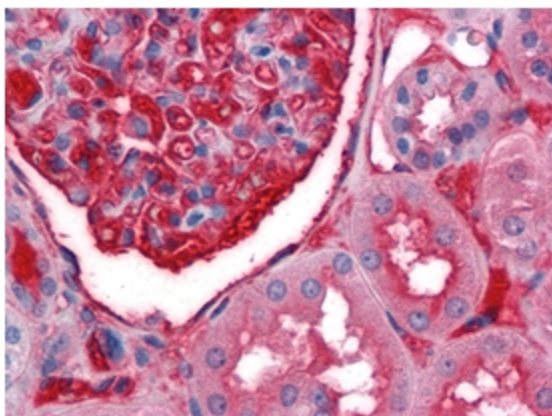
[View online »](#)

Synonyms: Alpha-1-B glycoprotein

### Product images:



Western blot analysis using A1BG antibody Cat.-No AM06423SU-N against A1BG (AA: 320-495)-hlgGfc transfected HEK293 (1) cell lysate.



Immunohistochemical analysis of paraffin-embedded human Kidney tissues using anti-A1BG antibody Cat.-No AM06423SU-N