

Product datasheet for **AM06421SU-N**

GM CSF (CSF2) Mouse Monoclonal Antibody [Clone ID: 3D3]

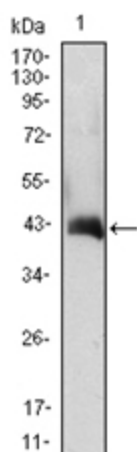
Product data:

Product Type:	Primary Antibodies
Clone Name:	3D3
Applications:	ELISA, WB
Recommended Dilution:	ELISA: 1/10000. Western Blot: 1/500 - 1/2000.
Reactivity:	Human
Host:	Mouse
Isotype:	IgG1
Clonality:	Monoclonal
Immunogen:	Purified recombinant fragment of human CSF2 (aa18-144) expressed in E. Coli.
Specificity:	Recognizes GM-CSF / CSF2
Formulation:	State: Ascites State: Ascitic fluid containing 0.03% Sodium Azide.
Conjugation:	Unconjugated
Storage:	Store the antibody undiluted at 2-8°C for one month or (in aliquots) at -20°C for longer. Avoid repeated freezing and thawing.
Stability:	Shelf life: one year from despatch.
Predicted Protein Size:	16 kDa
Gene Name:	colony stimulating factor 2
Database Link:	Entrez Gene 1437 Human P04141
Background:	The protein encoded by this gene is a cytokine that controls the production, differentiation, and function of granulocytes and macrophages. The active form of the protein is found extracellularly as a homodimer. This gene has been localized to a cluster of related genes at chromosome region 5q31, which is known to be associated with interstitial deletions in the 5q- syndrome and acute myelogenous leukemia. Other genes in the cluster include those encoding interleukins 4, 5, and 13.
Synonyms:	CSF2, GMCSF, Sargramostim, Molgramostin



[View online »](#)

Product images:



Western blot analysis using CSF2 antibody Cat.-No AM06421SU-N against CSF2 (AA: 18-144)-hlgGfc transfected HEK293 cell lysate.