

## Product datasheet for **AM06420SU-N**

### CDC25C Mouse Monoclonal Antibody [Clone ID: 1F12]

#### Product data:

Product Type:	Primary Antibodies
Clone Name:	1F12
Applications:	ELISA, IHC, WB
Recommended Dilution:	<b>ELISA:</b> 1/10000. <b>Western blot:</b> 1/500-1/2000. <b>Immunohistochemistry on Paraffin Sections:</b> 1/200 - 1/1000.
Reactivity:	Human
Host:	Mouse
Isotype:	IgG1
Clonality:	Monoclonal
Immunogen:	Purified recombinant fragment of Human CDC25C expressed in E. Coli.
Specificity:	Recognizes Protein Tyrosine Phosphatase CDC25C.
Formulation:	State: Ascites State: Ascitic fluid containing 0.03% Sodium Azide.
Conjugation:	Unconjugated
Storage:	Store the antibody undiluted at 2-8°C for one month or (in aliquots) at -20°C for longer. Avoid repeated freezing and thawing.
Stability:	Shelf life: one year from despatch.
Gene Name:	cell division cycle 25C
Database Link:	<a href="#">Entrez Gene 995 Human P30307</a>



[View online »](#)

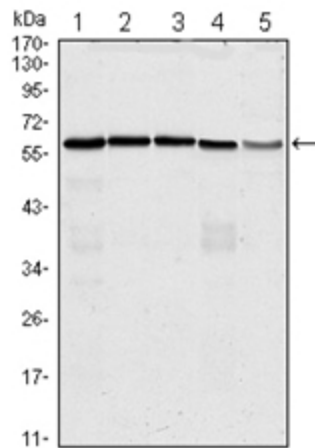
**Background:**

Cyclin-dependent kinases can be activated by CDC25, which removes inhibitory phosphates from tyrosine and threonine residues. At least three CDC25 genes (CDC25A, CDC25B, and CDC25C) have been identified in humans. Whereas CDC25A and CDC25B are expressed throughout the cell cycle, with peak expression in G1 for CDC25A and in both G1-S-phase and G2 for CDC25B, CDC25C is predominantly expressed in G2.

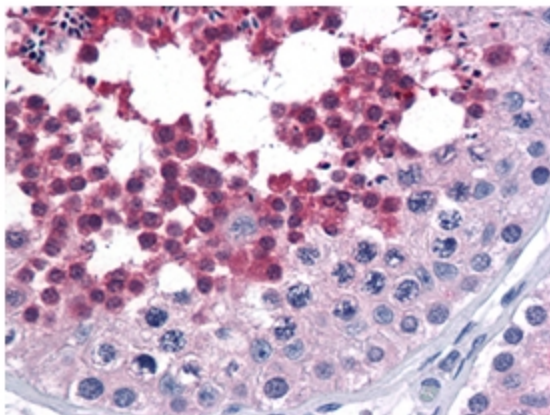
Cdc25C is a tyrosine phosphatase and belongs to the Cdc25 phosphatase family. It has been highly conserved during evolution and it plays a key role in the regulation of cell division. It directs dephosphorylation of cyclin B-bound CDC2 and triggers entry into mitosis. It is also thought to suppress p53-induced growth arrest. Cdc25C is mainly expressed in G2 phase. Multiple alternatively spliced transcript variants of this gene have been described, however, the full-length nature of many of them is not known.

**Synonyms:**

CDC25

**Product images:**


Western blot analysis using anti-CDC25C antibody Cat.-No AM06420SU-N against Hela (Lane 1), K562 (Lane 2), PC-3 (Lane 3), HEK293 (Lane 4) and Raw264.7 (Lane 5) cell lysate.



Immunohistochemical analysis of paraffin-embedded human Testis tissues using anti-CDC25C antibody Cat.-No AM06420SU-N