

## Product datasheet for **AM06416SU-N**

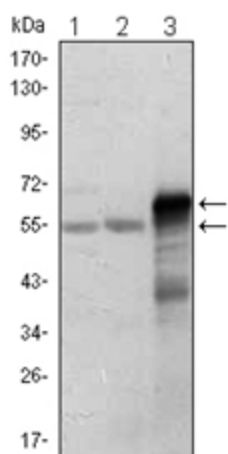
### ETS1 Mouse Monoclonal Antibody [Clone ID: 10D2]

#### Product data:

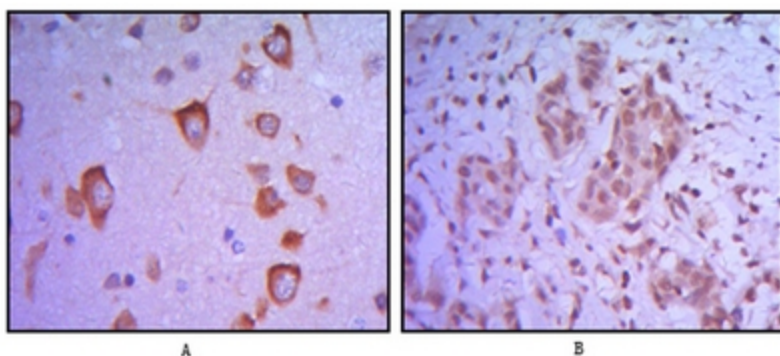
Product Type:	Primary Antibodies
Clone Name:	10D2
Applications:	ELISA, IHC, WB
Recommended Dilution:	<b>ELISA:</b> 1/10000. <b>Western Blot:</b> 1/500 - 1/2000. <b>Immunohistochemistry on Paraffin Sections:</b> 1/200 - 1/1000.
Reactivity:	Human
Host:	Mouse
Isotype:	IgG1
Clonality:	Monoclonal
Immunogen:	Purified recombinant fragment of human ETS1 expressed in E. Coli.
Specificity:	Recognizes ETS1
Formulation:	State: Ascites State: Ascitic fluid containing 0.03% Sodium Azide.
Conjugation:	Unconjugated
Storage:	Store the antibody undiluted at 2-8°C for one month or (in aliquots) at -20°C for longer. Avoid repeated freezing and thawing.
Stability:	Shelf life: one year from despatch.
Predicted Protein Size:	50.4 kDa
Gene Name:	ETS proto-oncogene 1, transcription factor
Database Link:	<a href="#">Entrez Gene 2113 Human P14921</a>
Background:	The ETS1 is a transcription factor known to regulate expression of a number of genes involved in extracellular matrix remodeling. ETS1 is absent from normal gastric epithelium but is expressed in approximately 60% of gastric carcinomas and oral squamous cell carcinomas with a significant correlation to the tumor stage.
Synonyms:	Protein C-ets-1, EWSR2, p54



[View online »](#)

**Product images:**

Western blot analysis using ETS1 antibody Cat.-No AM06416SU-N against Jurkat (Lane 1), HepG2 (Lane 2) and ETS1-hlgGfc transfected HEK293 (Lane 3) cell lysate.



Immunohistochemical analysis of paraffin-embedded human brain tissue (A) and breast tumor (B) using ETS1 antibody Cat.-No AM06416SU-N