

## Product datasheet for **AM06411SU-N**

### MSH6 Mouse Monoclonal Antibody [Clone ID: 3A10H7]

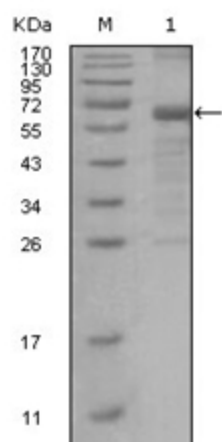
#### Product data:

Product Type:	Primary Antibodies
Clone Name:	3A10H7
Applications:	ELISA, WB
Recommended Dilution:	<b>ELISA:</b> 1/10000. <b>Western Blot:</b> 1/500 - 1/2000.
Reactivity:	Human
Host:	Mouse
Isotype:	IgG1
Clonality:	Monoclonal
Immunogen:	Purified recombinant fragment of MSH6 expressed in E. Coli.
Specificity:	Recognizes MSH6
Formulation:	State: Ascites State: Ascitic fluid containing 0.03% Sodium Azide.
Conjugation:	Unconjugated
Storage:	Store the antibody undiluted at 2-8°C for one month or (in aliquots) at -20°C for longer. Avoid repeated freezing and thawing.
Stability:	Shelf life: one year from despatch.
Gene Name:	mutS homolog 6
Database Link:	<a href="#">Entrez Gene 2956 Human P52701</a>
Background:	Defects in MSH6 are a cause of hereditary non-polyposis colorectal cancer (HNPCC) (Lynch syndrome). HNPCC is an autosomal, dominantly inherited disease associated with marked increase in cancer susceptibility. It is characterized by a familial predisposition to early onset colorectal carcinoma (crc) and extra-colonic cancers of the gastrointestinal, urological and female reproductive tracts. HNPCC is reported to be the most common form of inherited colorectal cancer in the western world. MSH6 is central to mismatch DNA repair.
Synonyms:	DNA mismatch repair protein Msh6, GTBP



[View online »](#)

## Product images:



Western blot analysis using MSH6 antibody Cat.-  
No AM06411SU-N against truncated MSH6  
recombinant protein.