

## Product datasheet for **AM06410SU-N**

### **TYRO3 Mouse Monoclonal Antibody [Clone ID: 6D6F10]**

#### **Product data:**

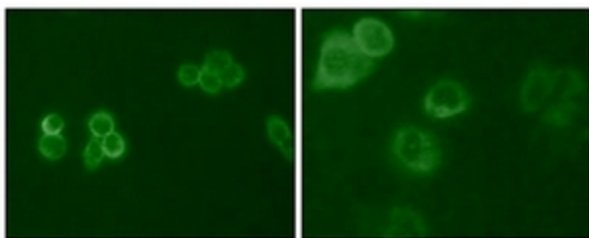
Product Type:	Primary Antibodies
Clone Name:	6D6F10
Applications:	ELISA, IF
Recommended Dilution:	<b>ELISA:</b> 1/10000. <b>Immunofluorescence:</b> 1/200 - 1/1000.
Reactivity:	Human
Host:	Mouse
Isotype:	IgG1
Clonality:	Monoclonal
Immunogen:	Purified recombinant fragment of Tyro3 (aa138-321) expressed in E. Coli.
Specificity:	Recognizes Tyro3 (also known as Sky and Rse).
Formulation:	State: Ascites State: Ascitic fluid containing 0.03% Sodium Azide.
Conjugation:	Unconjugated
Storage:	Store the antibody undiluted at 2-8°C for one month or (in aliquots) at -20°C for longer. Avoid repeated freezing and thawing.
Stability:	Shelf life: one year from despatch.
Gene Name:	TYRO3 protein tyrosine kinase
Database Link:	<a href="#">Entrez Gene 7301 Human Q06418</a>
Background:	Tyro3 (also known as Sky and Rse), with 890-amino acid protein (about 98kDa), belongs to the Axl/Tyro3 family of receptor tyrosine kinases, which also includes Axl and Mer. Gas6 (growth arrest-specific gene-6) is a ligand for all members of the Axl family and they play essential roles in spermatogenesis, immunoregulation, and phagocytosis. Tyro3 was expressed at high levels during postnatal development and in the adult in the cortex. Tyro3 and Gas6 have neurotrophic roles in the nervous system. In addition, the signalling interactions of Axl and Tyro3 may play roles in tumourigenesis, inflammation as well as other cell proliferative diseases.



[View online »](#)

Synonyms: BYK, DTK, RSE, SKY

**Product images:**



Immunofluorescence analysis of HeLa (Left) and MCF-7 (Right) cells using Tyro3 antibody Cat.-NO AM06410SU-N (green).