

Product datasheet for **AM06402SU-N**

beta III Tubulin (TUBB3) Mouse Monoclonal Antibody [Clone ID: 2E9]

Product data:

Product Type:	Primary Antibodies
Clone Name:	2E9
Applications:	ELISA, FC, IF, WB
Recommended Dilution:	ELISA: 1/10000. Western Blot: 1/500 - 1/2000. Flow Cytometry: 1/200 - 1/400. Immunofluorescence: 1/200 - 1/1000.
Reactivity:	Human
Host:	Mouse
Isotype:	IgG1
Clonality:	Monoclonal
Immunogen:	Purified recombinant fragment of human TUBB3 expressed in E. Coli.
Specificity:	Recognizes Tubulin, beta 3, also known as TUBB3.
Formulation:	State: Ascites State: Ascitic fluid containing 0.03% Sodium Azide.
Conjugation:	Unconjugated
Storage:	Store undiluted at 2-8°C for one month or (in aliquots) at -20°C for longer. Avoid repeated freezing and thawing.
Stability:	Shelf life: one year from despatch.
Predicted Protein Size:	50 kDa
Gene Name:	tubulin beta 3 class III
Database Link:	Entrez Gene 10381 Human Q13509



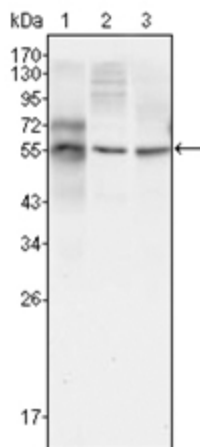
[View online »](#)

Background:

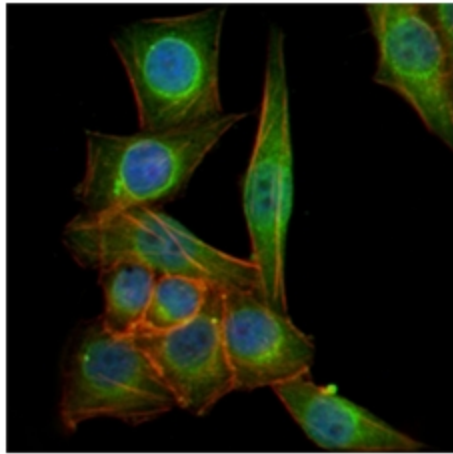
Tubulin, beta 3, also known as TUBB3. Tubulin is the major constituent of microtubules. It binds two moles of GTP, one at an exchangeable site on the beta chain and one at a non exchangeable site on the alpha-chain. Tubulin is a highly conserved protein with a molecular weight of ~50 kD. Microtubules play key roles in chromosome segregation in mitosis, intracellular transport, ciliary and flagellar bending, and structural support of the cytoskeleton. The two main tubulin isoforms, α - and β -tubulin, are usually products of separate genes. The β -tubulin family includes six expressed genes that produce the polypeptide isoforms known as Classes I through VI, each of which have a distinct pattern of expression. Class III β -tubulin is found in neurons and mammalian testis cells and is widely used as a neuronal marker in developmental neurobiology, neoplasia, and stem cell research. Class III β -tubulin expression in neuronal and neuroblastic tumors is differentiation dependent, and its expression in certain non-neuronal neoplasms has been associated with poor prognosis and/or resistance to chemotherapy.

Synonyms:

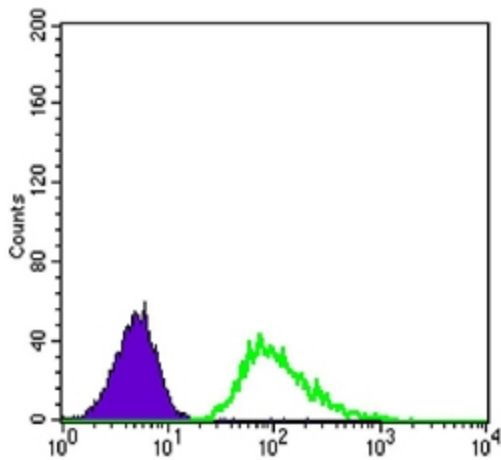
Tubulin beta-3 chain, Tubulin beta-III, Tubulin beta-4

Product images:

Western blot analysis using TUBB3 antibody Cat.-No AM06402SU-N against HepG2 (Lane 1), A549 (Lane 2) and HeLa (Lane 3) cell lysate.



Immunofluorescence analysis of PANC-1 cells using TUBB3 antibody Cat.-No AM06402SU-N (green). Blue: DRAQ5 fluorescent DNA dye. Red: Actin filaments have been labeled with Alexa Fluor-555 phalloidin.



Flow cytometric analysis of A549 cells using TUBB3 antibody Cat.-No AM06402SU-N (green) and negative control (purple).