

Product datasheet for **AM06400SU-N**

MEK2 (MAP2K2) Mouse Monoclonal Antibody [Clone ID: 7F5]

Product data:

Product Type:	Primary Antibodies
Clone Name:	7F5
Applications:	ELISA, FC, IF, WB
Recommended Dilution:	ELISA: 1/10000. Western Blot: 1/500 - 1/2000. Flow Cytometry: 1/200 - 1/400. Immunofluorescence: 1/200 - 1/1000.
Reactivity:	Human, Mouse, Rat
Host:	Mouse
Isotype:	IgG1
Clonality:	Monoclonal
Immunogen:	Purified recombinant fragment of human MAP2K2 expressed in E. Coli.
Specificity:	Recognizes MAP2K2
Formulation:	State: Ascites State: Ascitic fluid containing 0.03% Sodium Azide.
Conjugation:	Unconjugated
Storage:	Store the antibody undiluted at 2-8°C for one month or (in aliquots) at -20°C for longer. Avoid repeated freezing and thawing.
Stability:	Shelf life: one year from despatch.
Predicted Protein Size:	44 kDa
Gene Name:	mitogen-activated protein kinase kinase 2
Database Link:	Entrez Gene 5605 Human P36507



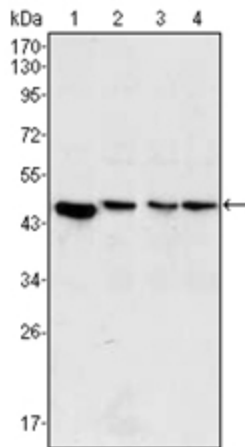
[View online »](#)

Background:

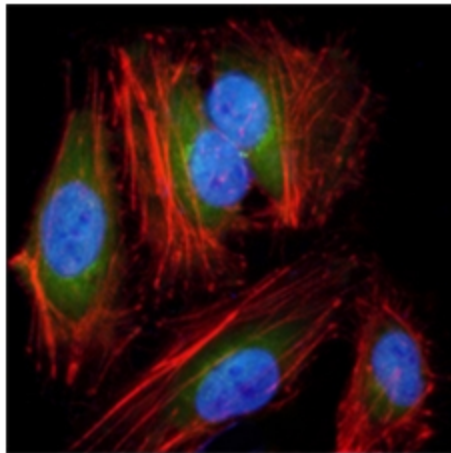
MAP2K2, also called MEK2, it is a dual specificity protein kinase that belongs to the MAP kinase kinase family. This kinase is known to play a critical role in mitogen growth factor signal transduction. It phosphorylates and thus activates MAPK1/ERK2 and MAPK2/ERK3. The activation of this kinase itself is dependent on the Ser/Thr phosphorylation by MAP kinase kinases. Mutations in this gene cause cardiofaciocutaneous syndrome (CFC syndrome), a disease characterized by heart defects, mental retardation, and distinctive facial features similar to those found in Noonan syndrome. The inhibition or degradation of this kinase is also found to be involved in the pathogenesis of Yersinia and anthrax.

Synonyms:

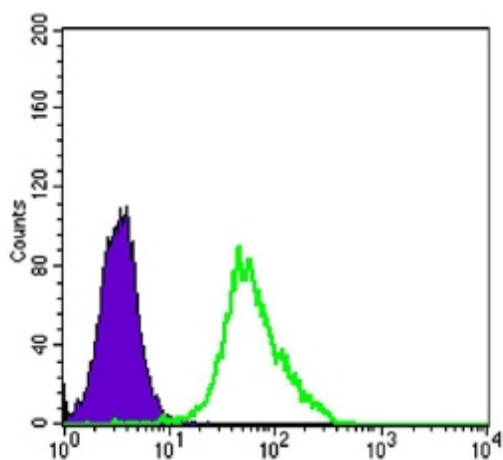
MAP kinase kinase 2, ERK activator kinase 2, MAPK/ERK kinase 2, MEK2, MKK2, MAP kinase kinase 2

Product images:


Western blot analysis using MAP2K2 antibody Cat.-No AM06400SU-N against PC-12 (Lane 1), Jurkat (Lane 2), HeLa (Lane 3) and NIH/3T3 (Lane 4) cell lysate.



Immunofluorescence analysis of HeLa cells using anti-MAP2K2 antibody Cat.-No AM06400SU-N (green). Red: Actin filaments have been labeled with DY-554 phalloidin. Blue: DRAQ5 fluorescent DNA dye.



Flow Cytometric analysis of HeLa cells using anti-MAP2K2 antibody Cat.-No AM06400SU-N (green) and negative control (purple).