

## Product datasheet for **AM06393SU-N**

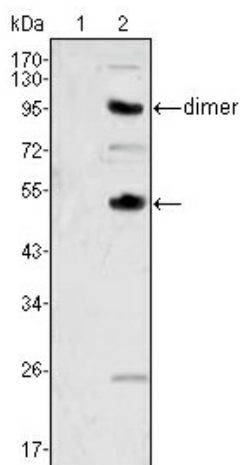
### M-CSF (CSF1) Mouse Monoclonal Antibody [Clone ID: 2D10]

#### Product data:

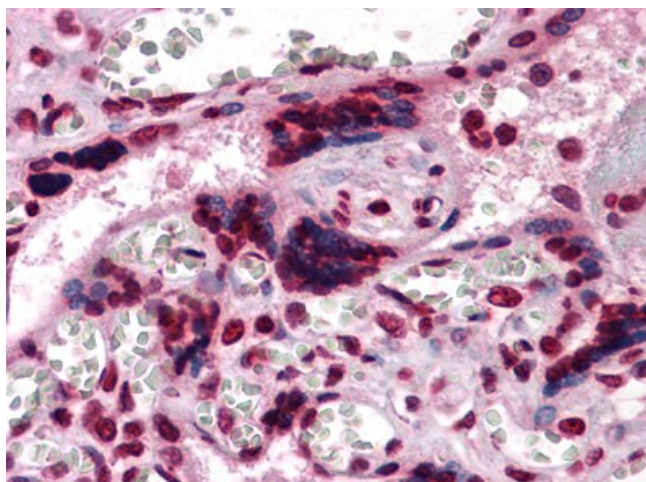
Product Type:	Primary Antibodies
Clone Name:	2D10
Applications:	ELISA, IHC, WB
Recommended Dilution:	<b>Western Blot:</b> 1/500 - 1/2000. <b>Immunohistochemistry on paraffin sections</b> 1/200 - 1/1000. <b>ELISA:</b> 1/10000.
Reactivity:	Human
Host:	Mouse
Isotype:	IgG1
Clonality:	Monoclonal
Immunogen:	Purified recombinant fragment of human CSF1 expressed in E. Coli (33-496).
Specificity:	This antibody reacts to CSF1.
Formulation:	State: Ascites State: Ascitic fluid containing 0.03% sodium azide.
Conjugation:	Unconjugated
Storage:	Store the antibody undiluted at 2-8°C for one month or (in aliquots) at -20°C for longer. Avoid repeated freezing and thawing.
Stability:	Shelf life: one year from despatch.
Predicted Protein Size:	60 kDa
Gene Name:	colony stimulating factor 1
Database Link:	<a href="#">Entrez Gene 1435 Human P09603</a>
Background:	CSF1, also known as MCSF, is a four- $\alpha$ -helical bundle cytokine that controls the production, differentiation, and function of macrophages. The active form of the protein is found extracellularly as a disulfide-linked homodimer, and is thought to be produced by proteolytic cleavage of membrane-bound precursors. This protein may be involved in development of the placenta.
Synonyms:	CSF1, MCSF, Macrophage colony-stimulating factor 1, Macrophage Colony Stimulating Factor



[View online »](#)

**Product images:**

Western blot analysis using CSF1 mouse mAb against human recombinant CSF2 (AA:18-144) (1) and CSF1 (AA:33-496) (2).



Immunohistochemical analysis of paraffin-embedded human Placenta tissues using anti-CSF1 mouse mAb