

## Product datasheet for **AM06390SU-N**

### CD38 Mouse Monoclonal Antibody [Clone ID: 6E12D]

#### Product data:

Product Type:	Primary Antibodies
Clone Name:	6E12D
Applications:	ELISA, IHC, WB
Recommended Dilution:	<b>Western Blot:</b> 1/500 - 1/2000. <b>Immunohistochemistry on paraffin sections:</b> 1/200 - 1/1000. <b>ELISA:</b> 1/10000.
Reactivity:	Human
Host:	Mouse
Isotype:	IgG1
Clonality:	Monoclonal
Immunogen:	Purified recombinant fragment of human CD38 expressed in E. Coli.
Specificity:	This antibody reacts to CD38.
Formulation:	State: Ascites State: Ascitic fluid containing 0.03% sodium azide.
Conjugation:	Unconjugated
Storage:	Store the antibody undiluted at 2-8°C for one month or (in aliquots) at -20°C for longer. Avoid repeated freezing and thawing.
Stability:	Shelf life: one year from despatch.
Predicted Protein Size:	34 kDa
Gene Name:	CD38 molecule
Database Link:	<a href="#">Entrez Gene 952 Human P28907</a>



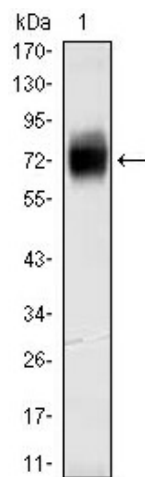
[View online »](#)

**Background:**

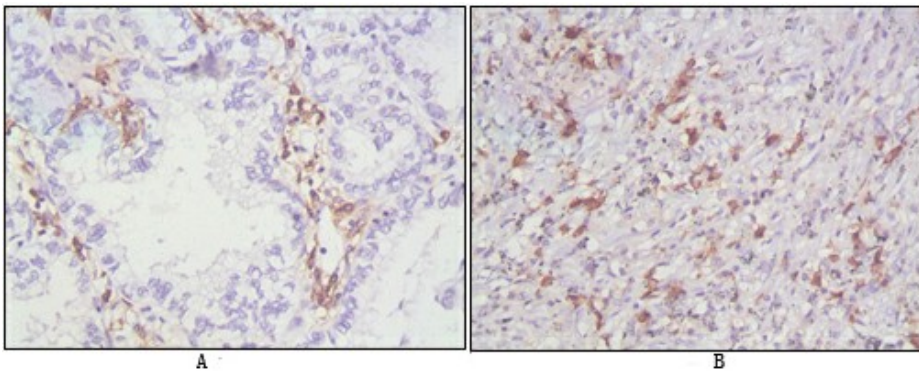
CD38 is a type II integral membrane glycoprotein which is present on early B and T cell lineages and activated B and T cells but is absent from most mature resting peripheral lymphocytes. CD38 is also found on thymocytes, pre-B cells, germinal center B cells, mitogen-activated T cells, monocytes and Ig-secreting plasma cells. CD38 acts as a NAD glycohydrolase in T lymphocytes. On hematopoietic cells CD38 induces activation, proliferation, and differentiation of mature T and B cells and mediates apoptosis of myeloid and lymphoid progenitor cells. In addition to acting as a signaling receptor, CD38 is also an enzyme capable of producing several calcium-mobilizing metabolites, including cyclic adenosine diphosphate ribose (cADPR). CD38 also plays a role in maintaining survival of an invariant NK T (iNKT) cell subset that preferentially contributes to the maintenance of immunological tolerance.

**Synonyms:**

cADPr hydrolase 1, T10

**Product images:**

Western blot analysis using CD38 mouse mAb against CD38-hlgGfc transfected HEK293 cell lysate.



Immunohistochemical analysis of paraffin-embedded human lung cancer (A), lymphonodus tissue (B), showing cytomembrane localization using CD38 mouse mAb with DAB staining.