

## Product datasheet for **AM06387SU-N**

### Cytokeratin 15 (KRT15) Mouse Monoclonal Antibody [Clone ID: 6E7]

#### Product data:

Product Type:	Primary Antibodies
Clone Name:	6E7
Applications:	ELISA, FC, IF, IHC, WB
Recommended Dilution:	<b>ELISA:</b> 1/10000. <b>Western Blot:</b> 1/500-1/2000. <b>Flow Cytometry:</b> 1/200-1/400. <b>Immunofluorescence:</b> 1/200-1/1000. <b>Immunohistochemistry on Paraffin Sections:</b> 1/200-1/1000.
Reactivity:	Human
Host:	Mouse
Isotype:	IgG2a
Clonality:	Monoclonal
Immunogen:	Purified recombinant fragment of KRT15 expressed in E. Coli.
Specificity:	This antibody recognizes Human KRT15. Other species not tested.
Formulation:	State: Ascites State: Ascitic fluid containing 0.03% sodium azide.
Conjugation:	Unconjugated
Storage:	Store the antibody undiluted at 2-8°C for one month or (in aliquots) at -20°C for longer. Avoid repeated freezing and thawing.
Stability:	Shelf life: one year from despatch.
Predicted Protein Size:	49 kDa
Gene Name:	keratin 15
Database Link:	<a href="#">Entrez Gene 3866 Human P19012</a>



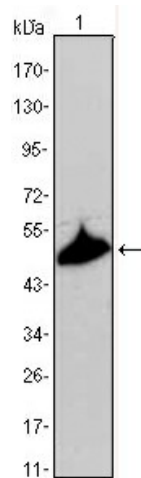
[View online »](#)

**Background:**

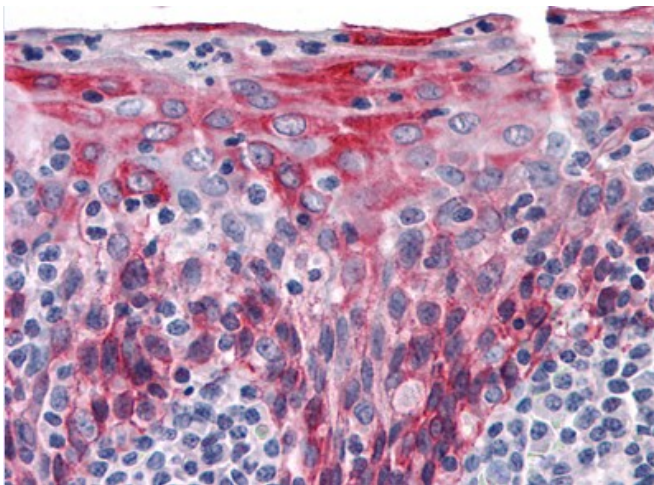
The protein encoded by this gene is a member of the keratin gene family. The keratins are intermediate filament proteins responsible for the structural integrity of epithelial cells and are subdivided into cytokeratins and hair keratins. Keratin 15 is a type I keratin without a defined type II partner. Keratin 15 is expressed primarily in the basal keratinocytes of stratified tissues, including the fetal epidermis and fetal nail. Expression of keratin 15 is downregulated in some hyperproliferating situations, such as psoriasis and hypertrophic scars. Because keratinocytes in psoriasis and hypertrophic scars are activated, it is suggested that keratin 15 expression is not compatible with keratinocyte activation and the keratin 15 gene is downregulated to maintain the activated phenotype.

**Synonyms:**

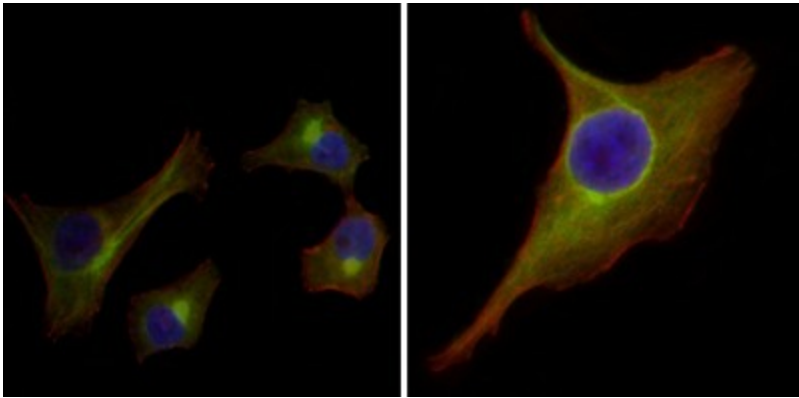
Cytokeratin-15, CK-15, K15, Keratin-15, Keratin 15, KRTB, KRT15

**Product images:**

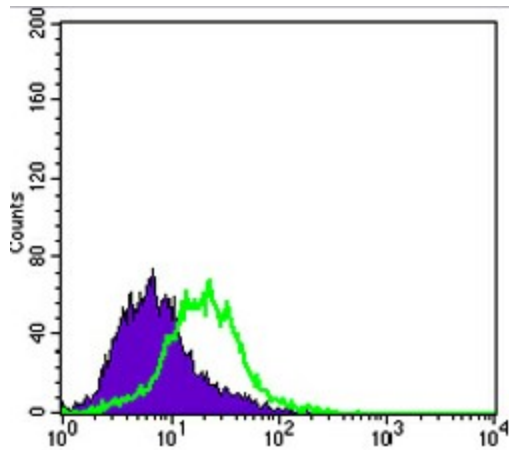
Western blot analysis using KRT15 mouse mAb against A431 cell lysate.



Immunohistochemical analysis of paraffin-embedded human Tonsil tissues using KRT15 mouse mAb



Immunofluorescence analysis of HepG2 (left) and PACN-1 (right) cells using KRT15 mouse mAb (green). Red: Actin filaments have been labeled with DY-554 phalloidin. Blue: DRAQ5 fluorescent DNA dye.



Flow cytometric analysis of PACN-1 cells using KRT15 mouse mAb (green) and negative control (purple).