

Product datasheet for **AM06382SU-N**

BDH1 Mouse Monoclonal Antibody [Clone ID: 1A5]

Product data:

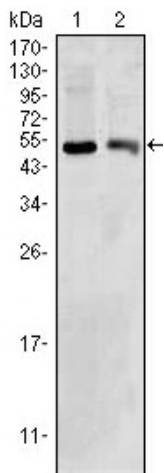
Product Type:	Primary Antibodies
Clone Name:	1A5
Applications:	ELISA, IHC, WB
Recommended Dilution:	Western Blot: 1/500 - 1/2000. Immunohistochemistry on paraffin sections 1/200 - 1/1000. ELISA: 1/10000.
Reactivity:	Human, Mouse
Host:	Mouse
Isotype:	IgG1
Clonality:	Monoclonal
Immunogen:	Purified recombinant fragment of human BDH1 expressed in E. Coli.
Specificity:	This antibody reacts to BDH1.
Formulation:	State: Ascites State: Ascitic fluid containing 0.03% sodium azide.
Conjugation:	Unconjugated
Storage:	Store the antibody undiluted at 2-8°C for one month or (in aliquots) at -20°C for longer. Avoid repeated freezing and thawing.
Stability:	Shelf life: one year from despatch.
Predicted Protein Size:	38 kDa
Gene Name:	3-hydroxybutyrate dehydrogenase, type 1
Database Link:	Entrez Gene 622 Human Q02338
Background:	BDH1 (3-hydroxybutyrate dehydrogenase, type 1), it is a member of the short-chain dehydrogenase/reductase gene family. This protein forms a homotetrameric lipid-requiring enzyme of the mitochondrial membrane and has a specific requirement for phosphatidylcholine for optimal enzymatic activity. It catalyzes the interconversion of acetoacetate and (R)-3-hydroxybutyrate, the two major ketone bodies produced during fatty acid catabolism.



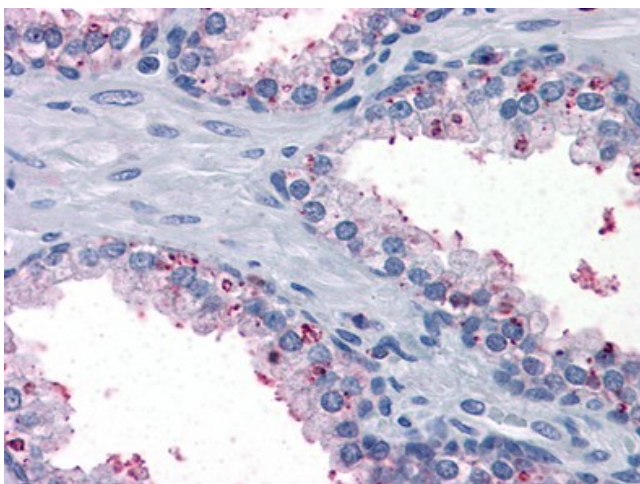
[View online »](#)

Synonyms: BDH; MGC2723; MGC4347; MGC9788; SDR9C1

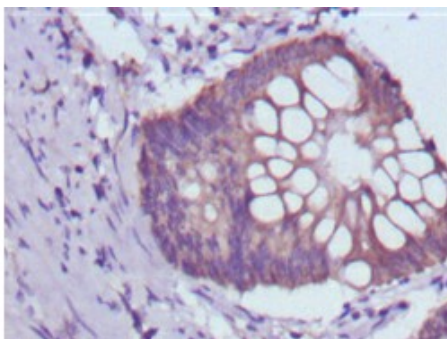
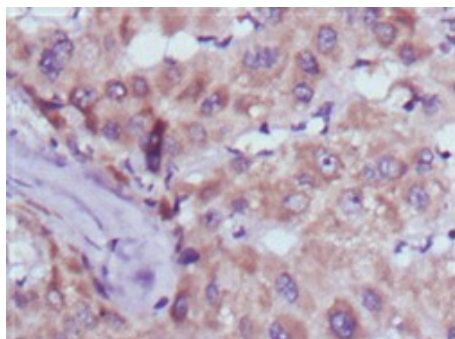
Product images:



Western blot analysis using BDH1 mouse mAb against HepG2 (1) and NIH/3T3 (2) cell lysate.



Immunohistochemical analysis of paraffin-embedded human Prostate tissues using anti-BDH1 mouse mAb



Immunohistochemical analysis of paraffin-embedded human liver cancer (left) and colorectal cancer tissues (right) using BDH1 mouse mAb with DAB staining.