

Product datasheet for **AM06381SU-N**

AKT2 Mouse Monoclonal Antibody [Clone ID: 1B6]

Product data:

Product Type:	Primary Antibodies
Clone Name:	1B6
Applications:	ELISA, IF, IHC, WB
Recommended Dilution:	Western Blot: 1/500 - 1/2000. Immunohistochemistry on paraffin sections: 1/200 - 1/1000. Immunofluorescence: 1/200 - 1/1000. ELISA: 1/10000.
Reactivity:	Human, Monkey, Rat
Host:	Mouse
Isotype:	IgG2b
Clonality:	Monoclonal
Immunogen:	Purified recombinant fragment of human AKT2 expressed in E. Coli.
Specificity:	This antibody reacts to AKT2.
Formulation:	State: Ascites State: Ascitic fluid containing 0.03% sodium azide.
Conjugation:	Unconjugated
Storage:	Store the antibody undiluted at 2-8°C for one month or (in aliquots) at -20°C for longer. Avoid repeated freezing and thawing.
Stability:	Shelf life: one year from despatch.
Predicted Protein Size:	60 kDa
Gene Name:	AKT serine/threonine kinase 2
Database Link:	Entrez Gene 208 Human P31751



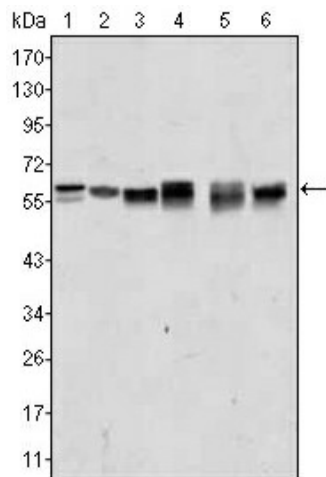
[View online »](#)

Background:

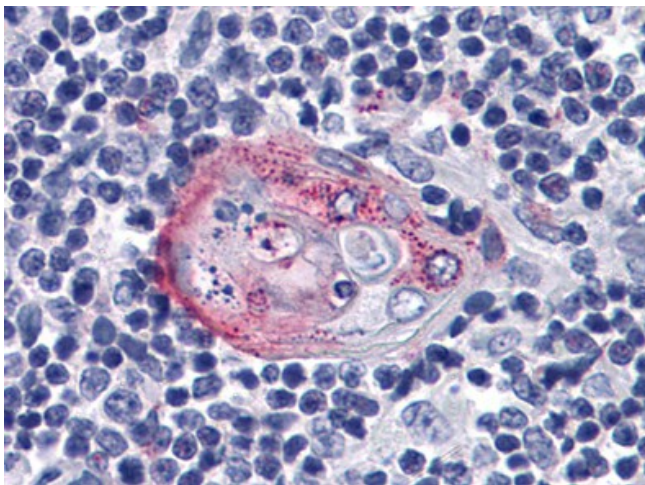
Akt2 (also designated protein kinase B beta or v-akt murine thymoma viral oncogene homolog 2), with 481-amino acid protein (about 53kDa), belongs to the AKT serine/threonine protein kinase family, which also includes Akt1 and Akt3. They are involved in a wide variety of biological processes including cell proliferation, differentiation, apoptosis, tumorigenesis, as well as glycogen synthesis and glucose uptake. Among the members of AKT family, Akt2 is associated with the development of human cancers. Akt2 inhibits cisplatin-induced JNK/p38 and Bax activation through phosphorylation of ASK1 and thus, plays an important role in chemoresistance. Further, Akt2 plays a specific role in muscle differentiation.

Synonyms:

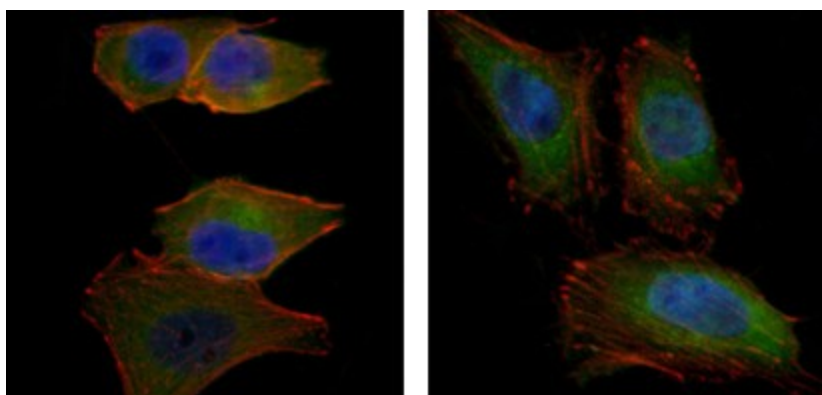
RAC-PK-beta, Protein kinase Akt-2, Protein kinase B beta

Product images:

Western blot analysis using AKT2 mouse mAb against A431 (1), Jurkat (2), HEK293 (3), A549 (4), MCF-7 (5) and PC-12 (6) cell lysate.



Immunohistochemical analysis of paraffin-embedded human Thymus tissues using anti-AKT2 mAb



Immunofluorescence analysis of PANC-1 (left) and HeLa (right) cells using AKT2 mouse mAb (green). Blue: DRAQ5 fluorescent DNA dye. Red: Actin filaments have been labeled with Alexa Fluor-555 phalloidin.