

Product datasheet for **AM06380SU-N**

ATP2C1 Mouse Monoclonal Antibody [Clone ID: 4G12]

Product data:

Product Type:	Primary Antibodies
Clone Name:	4G12
Applications:	ELISA, IHC, WB
Recommended Dilution:	Western Blot: 1/500 - 1/2000. Immunohistochemistry on paraffin sections 1/200 - 1/1000. ELISA: 1/10000.
Reactivity:	Human, Monkey
Host:	Mouse
Isotype:	IgG1
Clonality:	Monoclonal
Immunogen:	Purified recombinant fragment of ATP2C1 expressed in E. Coli.
Specificity:	This antibody reacts to ATP2C1.
Formulation:	State: Ascites State: Ascitic fluid containing 0.03% sodium azide.
Conjugation:	Unconjugated
Storage:	Store the antibody undiluted at 2-8°C for one month or (in aliquots) at -20°C for longer. Avoid repeated freezing and thawing.
Stability:	Shelf life: one year from despatch.
Predicted Protein Size:	100 kDa
Gene Name:	ATPase secretory pathway Ca ²⁺ transporting 1
Database Link:	Entrez Gene 27032 Human P98194



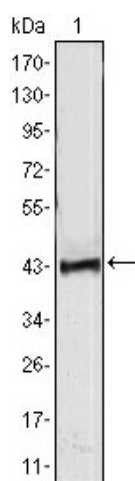
[View online »](#)

Background:

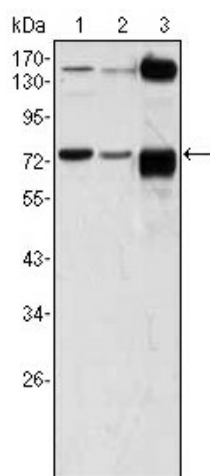
ATP2C1, also known as PMR1, it belongs to the family of P-type cation transport ATPases. This magnesium-dependent enzyme catalyzes the hydrolysis of ATP coupled with the transport of the calcium. The human homologue, ATP2C1 (alsodesignated SPLA in rat), also regulates the transport of calcium in the Golgicomplex and is related to other P-type ATPases family members, such as thesarco(endo)plasmic calcium ATPase (SERCA) and the plasma membrane calciumATPase (PCMA). ATP2C1 is a transmembrane protein that exists as twosplice variants, which vary by 20 amino acids. Defects in ATP2C1 cause Hailey-Hailey disease, which is an autosomal dominant disorder that is characterized by blisters and erosions of the skin. These findings provide further evidence that PMR1 plays a key role in maintaining the integrity of the epidermis by controlling intracellular calcium signaling.

Synonyms:

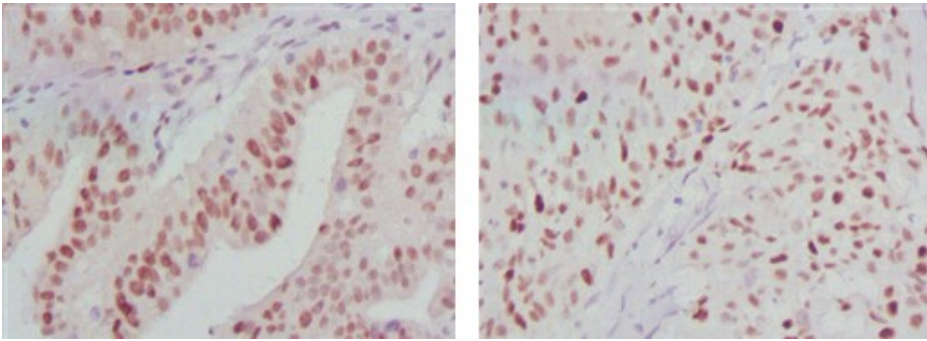
ATPase 2C1, KIAA1347, PMR1L, HUSSY-28, ATP-dependent Calcium pump PMR1

Product images:


Western blot analysis using ATP2C1 mAb against human ATP2C1 (AA: 119-269) recombinant protein. (Expected MW is 41.7 kDa)



Western blot analysis using ATP2C1 mouse mAb against A431 (1), Hela (2) and HEK293 (3) cell lysate.



Immunohistochemical analysis of paraffin-embedded human ovarian cancer (left) and breast cancer (right) tissues using ATP2C1 mouse mAb with DAB staining.