

Product datasheet for **AM06379PU-N**

LYRIC (MTDH) Mouse Monoclonal Antibody [Clone ID: 2F11C3]

Product data:

Product Type:	Primary Antibodies
Clone Name:	2F11C3
Applications:	ELISA, FC, IHC, WB
Recommended Dilution:	Western Blot: 1/500 - 1/2000. Immunohistochemistry on paraffin sections: 1/200 - 1/1000. Flow cytometry: 1/200 - 1/400. ELISA: 1/10000.
Reactivity:	Human
Host:	Mouse
Isotype:	IgG1
Clonality:	Monoclonal
Immunogen:	Purified recombinant fragment of human Metadherin expressed in E. Coli.
Specificity:	This antibody reacts to Metadherin.
Formulation:	PBS State: Aff - Purified State: Liquid purified Ig fraction Stabilizer: 50% glycerol Preservative: 0,03% sodium azide
Purification:	Affinity chromatography on Protein G
Conjugation:	Unconjugated
Storage:	Store the antibody undiluted at 2-8°C for one month or (in aliquots) at -20°C for longer. Avoid repeated freezing and thawing.
Stability:	Shelf life: one year from despatch.
Predicted Protein Size:	64 kDa
Gene Name:	metadherin
Database Link:	Entrez Gene 92140 Human Q86UE4



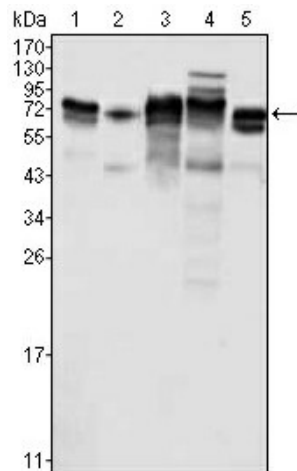
[View online »](#)

Background:

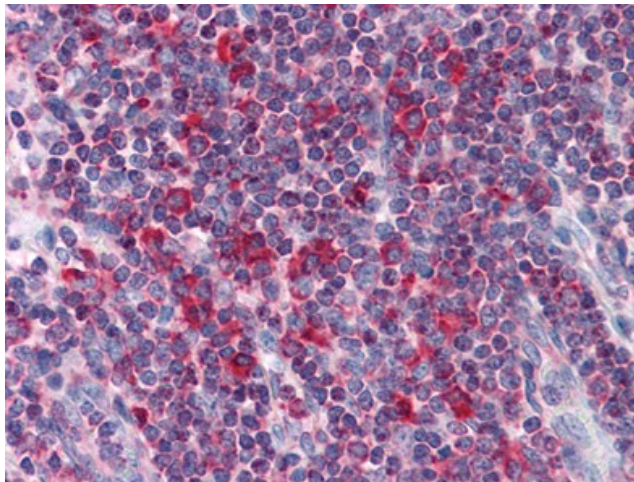
Metadherin (Metastasis adhesion protein), also known as MTDH, Lysine-Rich CEACAM1 co-isolated (LYRIC), is a novel protein that localizes with the tight junction proteins ZO-1 and occludin in polarized epithelial cells. At the tight junction, it acts not as a structural component, but is rather recruited during the maturation of the tight junction complex. Metadherin is overexpressed in breast cancer tissue and breast tumor xenografts, while much lower levels are expressed in normal breast tissue. Metadherin binds to lung vasculature, one of the four common sites of breast cancer metastasis, through a C-terminal segment in the extracellular domain; blocking this lung-homing domain with antibodies or inhibiting metadherin with siRNA has been reported to inhibit breast cancer metastasis.

Synonyms:

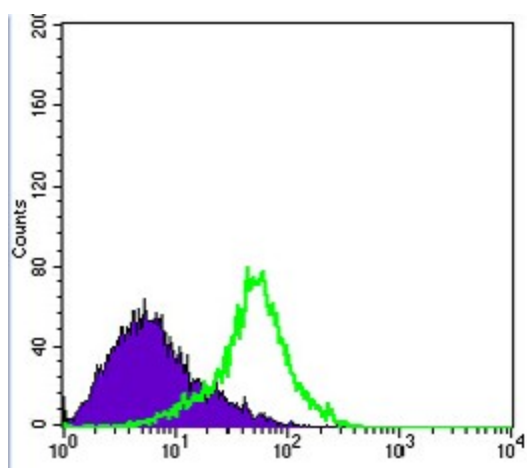
3D3/LYRIC, Metastasis adhesion protein, AEG1, LYRIC, Metadherin, AEG-1

Product images:

Western blot analysis using Metadherin mouse mAb against K562 (1), SKBR-3 (2), T47D (3), HeLa (4) and MCF-7 (5) cell lysate.



Immunohistochemical analysis of paraffin-embedded human Liver tissues using Metadherin mouse mAb



Flow cytometric analysis of HeLa cells using Metadherin mouse mAb (green) and negative control (purple).