

## Product datasheet for **AM06377PU-N**

### alpha 1 Fetoprotein (AFP) Mouse Monoclonal Antibody [Clone ID: 6E6]

#### Product data:

Product Type:	Primary Antibodies
Clone Name:	6E6
Applications:	ELISA, WB
Recommended Dilution:	<b>Western Blot:</b> 1/500 - 1/2000. <b>ELISA:</b> 1/10000.
Reactivity:	Human
Host:	Mouse
Isotype:	IgG2b
Clonality:	Monoclonal
Immunogen:	Purified recombinant fragment of human AFP expressed in E. Coli.
Specificity:	This antibody reacts to AFP.
Formulation:	PBS State: Aff - Purified State: Liquid purified Ig fraction Stabilizer: 50% glycerol Preservative: 0,03% sodium azide
Purification:	Affinity chromatography on Protein G
Conjugation:	Unconjugated
Storage:	Store the antibody undiluted at 2-8°C for one month or (in aliquots) at -20°C for longer. Avoid repeated freezing and thawing.
Stability:	Shelf life: one year from despatch.
Predicted Protein Size:	69 kDa
Gene Name:	alpha fetoprotein
Database Link:	<a href="#">Entrez Gene 174 Human P02771</a>



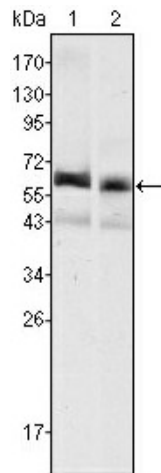
[View online »](#)

**Background:**

AFP (alpha-fetoprotein), a major plasma protein produced by the yolk sac and the liver during fetal life. Alpha-fetoprotein expression in adults is often associated with hepatoma or teratoma. However, hereditary persistence of alpha-fetoprotein may also be found in individuals with no obvious pathology. The protein is thought to be the fetal counterpart of serum albumin, and the alpha-fetoprotein and albumin genes are present in tandem in the same transcriptional orientation on chromosome 4. Alpha-fetoprotein is found in monomeric as well as dimeric and trimeric forms, and binds copper, nickel, fatty acids and bilirubin. The level of alpha-fetoprotein in amniotic fluid is used to measure renal loss of protein to screen for spina bifida and anencephaly.

**Synonyms:**

Alpha-1-fetoprotein, Alpha-fetoglobulin, HPAFP

**Product images:**

Western blot analysis using AFP mouse mAb against HepG2 (1) and SMMC-7721 (2) cell lysate.