

## Product datasheet for **AM06371SU-N**

### VEGF Receptor 2 (KDR) Mouse Monoclonal Antibody [Clone ID: 4B4]

#### Product data:

Product Type:	Primary Antibodies
Clone Name:	4B4
Applications:	ELISA, FC, IF, WB
Recommended Dilution:	<b>Western blot:</b> 1/500-1/2000. <b>Immunofluorescence:</b> 1/200-1/1000. <b>Flow Cytometry:</b> 1/200-1/400. <b>ELISA:</b> 1/10000.
Reactivity:	Human
Host:	Mouse
Isotype:	IgG1
Clonality:	Monoclonal
Immunogen:	Purified recombinant extracellular fragment of human VEGFR-2 / KDR (aa20-764) fused with hlgGfc tag expressed in HEK293 cells.
Specificity:	This antibody recognizes Human VEGFR-2 / KDR. Other species not tested.
Formulation:	State: Ascites State: Ascitic fluid containing 0.03% Sodium Azide
Conjugation:	Unconjugated
Storage:	Store undiluted at 2-8°C for one month or (in aliquots) at -20°C for longer. Avoid repeated freezing and thawing.
Stability:	Shelf life: one year from despatch.
Predicted Protein Size:	152 kDa
Gene Name:	kinase insert domain receptor
Database Link:	<a href="#">Entrez Gene 3791 Human P35968</a>



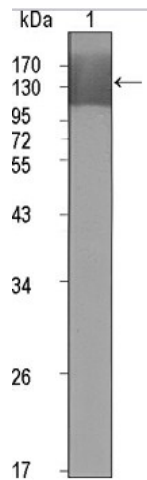
[View online »](#)

**Background:**

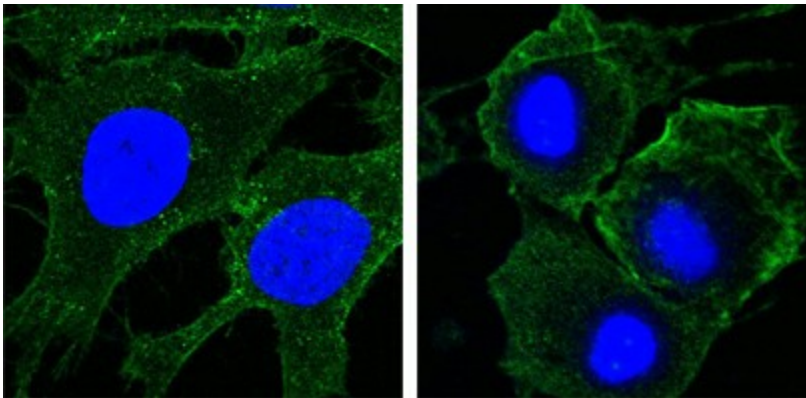
KDR has also been designated as VEGFR-2 (Vascular endothelial growth factor receptor 2), CD309 (cluster of differentiation 309) and Flk-1 (fetal liver kinase 1). Vascular endothelial growth factor (VEGF) is a major growth factor for endothelial cells. KDR is one of the two receptors of the VEGF. This receptor, known as kinase insert domain receptor, is a type III receptor tyrosine kinase. It functions as the main mediator of VEGF-induced endothelial proliferation, survival, migration, tubular morphogenesis and sprouting. The signalling and trafficking of this receptor are regulated by multiple factors, including Rab GTPase, P2Y purine nucleotide receptor, integrin alphaVbeta3, T-cell protein tyrosine phosphatase, etc.. Mutations of this gene are implicated in infantile capillary hemangiomas.

**Synonyms:**

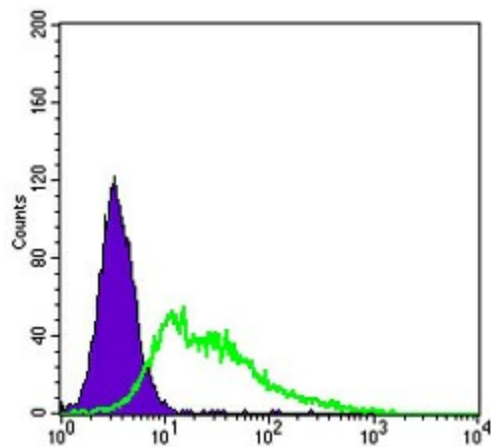
VEGFR2, FLK1, KDR, VEGF Receptor 2

**Product images:**

Western blot analysis using KDR mouse mAb against extracellular domain of human KDR (aa20-764).



Confocal immunofluorescence analysis of HeLa (left) and HepG2 (right) cells using VEGFR-2/KDR mouse mAb Cat.-No. AM06371SU-N (green). Blue: DRAQ5 fluorescent DNA dye.



Flow cytometric analysis of HepG2 cells using VEGFR-2/KDR mouse mAb Cat.-No. AM06371SU-N (green) and negative control (purple).