

Product datasheet for **AM06370SU-N**

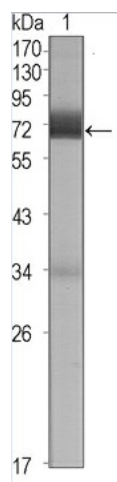
CER1 Mouse Monoclonal Antibody [Clone ID: 9D6]

Product data:

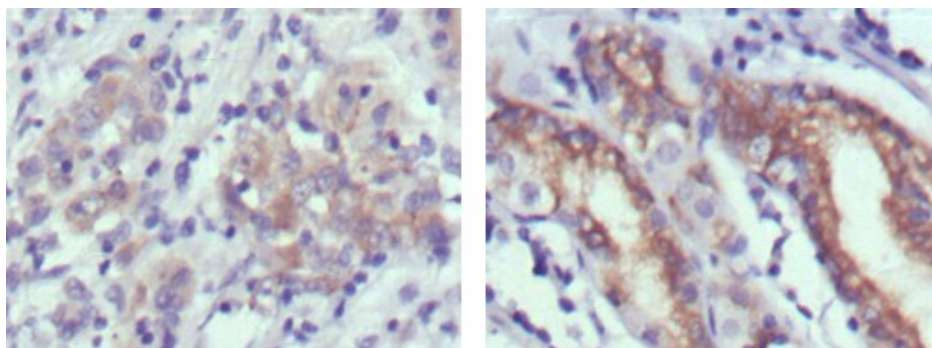
Product Type:	Primary Antibodies
Clone Name:	9D6
Applications:	ELISA, IHC, WB
Recommended Dilution:	Western Blot: 1/500 - 1/2000. Immunohistochemistry on paraffin sections 1/200 - 1/1000. ELISA: 1/10000.
Reactivity:	Human
Host:	Mouse
Isotype:	IgG1
Clonality:	Monoclonal
Immunogen:	Purified recombinant fragment of human CER1 expressed in E. Coli.
Specificity:	This antibody reacts to CER1.
Formulation:	State: Ascites State: Ascitic fluid containing 0.03% sodium azide.
Conjugation:	Unconjugated
Storage:	Store the antibody undiluted at 2-8°C for one month or (in aliquots) at -20°C for longer. Avoid repeated freezing and thawing.
Stability:	Shelf life: one year from despatch.
Predicted Protein Size:	30 kDa
Gene Name:	cerberus 1, DAN family BMP antagonist
Database Link:	Entrez Gene 9350 Human O95813
Background:	CER1: cerberus 1, cysteine knot superfamily, homolog (<i>Xenopus laevis</i>). It is a cytokine member of the cysteine knot superfamily, characterized by nine conserved cysteines and a cysteine knot region. The cerberus-related cytokines, together with Dan and DRM/Gremlin, represent a group of bone morphogenetic protein (BMP) antagonists that can bind directly to BMPs and inhibit their activity.
Synonyms:	CER1, DAND4



[View online »](#)

Product images:

Western blot analysis using CER1 mouse mAb against CER1 (aa18-267)-hlgGfc transfected HEK293 cell lysate (1).



Immunohistochemical analysis of paraffin-embedded human gastric cancer (left) and normal gastric tissues (right) using CER1 mouse mAb with DAB staining.