

Product datasheet for **AM06344SU-N**

REG1 alpha (REG1A) Mouse Monoclonal Antibody [Clone ID: 1A4]

Product data:

Product Type:	Primary Antibodies
Clone Name:	1A4
Applications:	ELISA, IF, IHC
Recommended Dilution:	ELISA: 1/10000. Immunofluorescence: 1/200 - 1/1000. Immunohistochemistry on Paraffin Sections: 1/200 - 1/1000.
Reactivity:	Human
Host:	Mouse
Isotype:	IgG1
Clonality:	Monoclonal
Immunogen:	Purified recombinant fragment of human REG1A fused with hlgGfc tag expressed in HEK293 cell line.
Specificity:	Recognizes REG1A (regenerating islet-derived 1 alpha)
Formulation:	State: Ascites State: Ascitic fluid containing 0.03% Sodium Azide.
Conjugation:	Unconjugated
Storage:	Store the antibody undiluted at 2-8°C for one month or (in aliquots) at -20°C for longer. Avoid repeated freezing and thawing.
Stability:	Shelf life: one year from despatch.
Predicted Protein Size:	19 kDa
Gene Name:	regenerating family member 1 alpha
Database Link:	Entrez Gene 5967 Human P05451



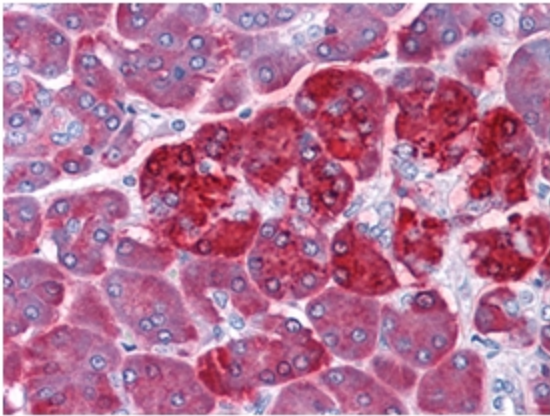
[View online »](#)

Background:

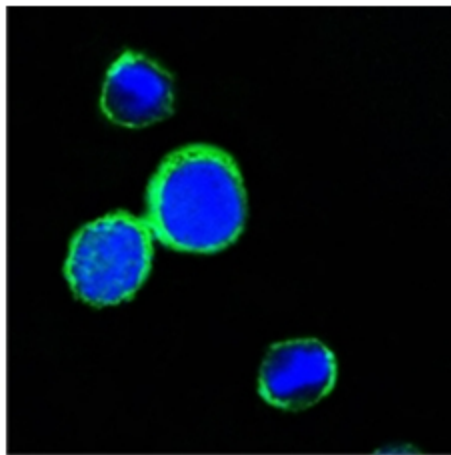
REG1A (regenerating islet-derived 1 alpha), also known as PTP, PSP, is a member of the Reg family of secreted proteins with a C-type lectin domain. REG1A is associated with islet cell regeneration and diabetogenesis and may be involved in pancreatic lithogenesis. Due to variable glycosylation, pancreatic REG1A exists as multiple species of 16 - 18 kDa. REG1A promotes the maintenance and growth of pancreatic islet β -cells and intestinal villi. It is upregulated in pancreatitis and some carcinomas. REG1A is an antigenic target in autoimmune diabetes.

Synonyms:

REG1A, PSPS, REG, Lithostathine-1-alpha, Pancreatic stone protein, PSP, Pancreatic thread protein, PTP, Islet of Langerhans regenerating protein, Regenerating protein I alpha, Islet cells regeneration factor, ICRF

Product images:

Immunohistochemical analysis of paraffin-embedded human Pancreas tissues using REG1A antibody Cat.-No AM06344SU-N



Confocal immunofluorescence analysis of PC12 cells using REG1A antibody Cat.-No AM06344SU-N (green). Blue: DRAQ5 fluorescent DNA dye.