

Product datasheet for **AM06341SU-N**

alpha 1 Antitrypsin (SERPINA1) Mouse Monoclonal Antibody [Clone ID: 2B12]

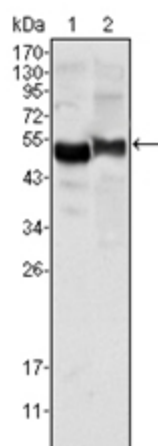
Product data:

Product Type:	Primary Antibodies
Clone Name:	2B12
Applications:	ELISA, WB
Recommended Dilution:	ELISA: 1/10000. Western Blot: 1/500 - 1/2000.
Reactivity:	Human, Mouse
Host:	Mouse
Isotype:	IgG1
Clonality:	Monoclonal
Immunogen:	Purified recombinant fragment of human AAT expressed in E. Coli.
Specificity:	Recognizes AAT, also known as SERPINA1
Formulation:	State: Ascites State: Ascitic fluid containing 0.03% Sodium Azide.
Conjugation:	Unconjugated
Storage:	Store the antibody undiluted at 2-8°C for one month or (in aliquots) at -20°C for longer. Avoid repeated freezing and thawing.
Stability:	Shelf life: one year from despatch.
Predicted Protein Size:	47 kDa
Gene Name:	serpin family A member 1
Database Link:	Entrez Gene 5265 Human P01009
Background:	AAT, also known as SERPINA1; serpin peptidase inhibitor, clade A (alpha-1 antiproteinase, antitrypsin), member 1. It is secreted and is a serine protease inhibitor whose targets include elastase, plasmin, thrombin, trypsin, chymotrypsin, and plasminogen activator. Severe Serpin A1 deficiency leads to several clinical complications such as pulmonary emphysema, juvenile hepatitis, cirrhosis and hepatocellular carcinoma.
Synonyms:	SERPINA1, AAT



[View online »](#)

Product images:



Western blot analysis using AAT antibody Cat.-No AM06341SU-N against human plasma (Lane 1) and NIH/3T3 cell lysate (Lane 2).