

Product datasheet for **AM06337SU-N**

CD18 (ITGB2) Mouse Monoclonal Antibody [Clone ID: 10E12]

Product data:

Product Type:	Primary Antibodies
Clone Name:	10E12
Applications:	ELISA, IF
Recommended Dilution:	ELISA: 1/10000. Immunofluorescence: 1/200 - 1/1000.
Reactivity:	Human, Mouse
Host:	Mouse
Isotype:	IgG2b
Clonality:	Monoclonal
Immunogen:	Purified recombinant fragment of CD18 expressed in E. Coli.
Specificity:	Recognizes CD18 also known as ITGB2 (integrin beta chain beta 2).
Formulation:	State: Ascites State: Ascitic fluid containing 0.03% Sodium Azide.
Conjugation:	Unconjugated
Storage:	Store the antibody undiluted at 2-8°C for one month or (in aliquots) at -20°C for longer. Avoid repeated freezing and thawing.
Stability:	Shelf life: one year from despatch.
Predicted Protein Size:	85 kDa
Gene Name:	integrin subunit beta 2
Database Link:	Entrez Gene 3689 Human P05107



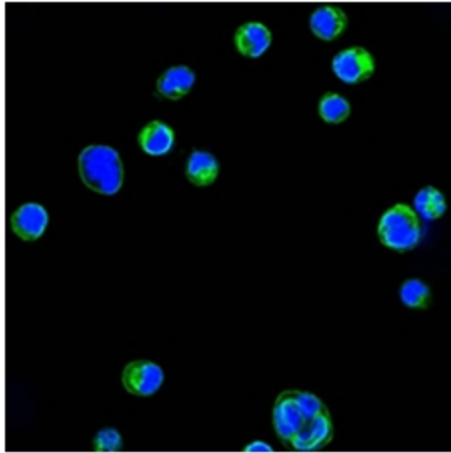
[View online »](#)

Background:

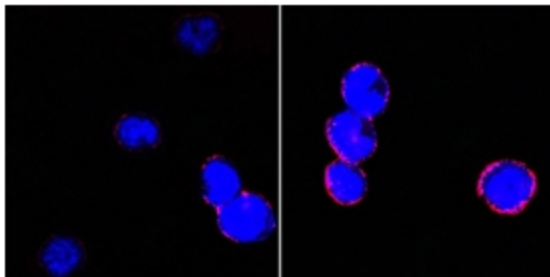
CD18, also known as ITGB2 (integrin beta chain beta 2). Integrins are integral cell-surface proteins composed of an alpha chain and a beta chain. A given chain may combine with multiple partners resulting in different integrins. For example, beta 2 combines with the alpha L chain to form the integrin LFA-1, and combines with the alpha M chain to form the integrin Mac-1. Integrins are known to participate in cell adhesion as well as cell-surface mediated signalling. CD18 is expressed by most leucocytes. Defects in this gene are the cause of leukocyte adhesion deficiency type I (LAD1). Two transcript variants encoding the same protein have been identified for this gene.

Synonyms:

Integrin beta-2, MFI7

Product images:

Confocal immunofluorescence analysis of HL60 cells using CD18 antibody Cat.-No AM06337SU-N (green). Blue: DRAQ5 fluorescent DNA dye.



Confocal immunofluorescence analysis of BCBL-1 cells (left) and L1210 cells (right) using CD18 antibody Cat.-No AM06337SU-N (red). Blue: DRAQ5 fluorescent DNA dye.