

Product datasheet for **AM06335SU-N**

Islet 1 (ISL1) Mouse Monoclonal Antibody [Clone ID: 1H9]

Product data:

Product Type:	Primary Antibodies
Clone Name:	1H9
Applications:	ELISA, IF, IHC, WB
Recommended Dilution:	ELISA: 1/10000. Western Blot: 1/500 - 1/2000. Immunofluorescence: 1/200 - 1/1000. Immunohistochemistry on Paraffin Sections: 1/200 - 1/1000.
Reactivity:	Human
Host:	Mouse
Isotype:	IgG1
Clonality:	Monoclonal
Immunogen:	Purified recombinant fragment of human ISL1 expressed in E. Coli.
Specificity:	Recognizes ISL1 (ISL1 transcription factor).
Formulation:	State: Ascites State: Ascitic fluid containing 0.03% Sodium Azide.
Conjugation:	Unconjugated
Storage:	Store the antibody undiluted at 2-8°C for one month or (in aliquots) at -20°C for longer. Avoid repeated freezing and thawing.
Stability:	Shelf life: one year from despatch.
Predicted Protein Size:	39 kDa
Gene Name:	ISL LIM homeobox 1
Database Link:	Entrez Gene 3670 Human P61371



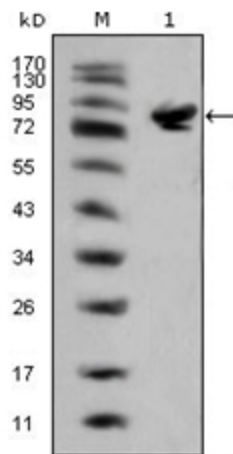
[View online »](#)

Background:

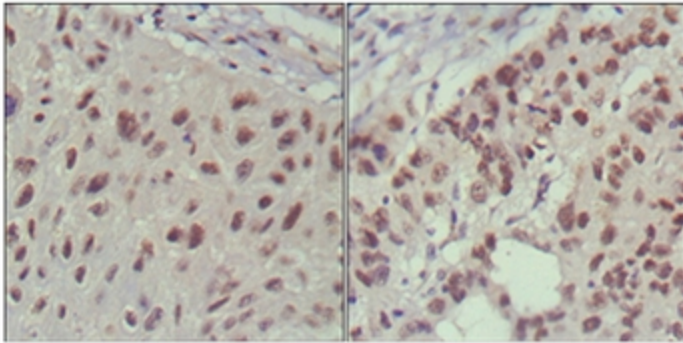
ISL1 (ISL1 transcription factor, LIM/homeodomain) is a member of the LIM/homeodomain family of transcription factors. It binds to the enhancer region of the insulin gene, among others, and may play an important role in regulating insulin gene expression. It is central to the development of pancreatic cell lineages and may also be required for motor neuron generation. Islet-1 expression defines cardiac progenitor cell populations and is required for normal cardiac development and asymmetry. Mutations in this gene have been associated with maturity-onset diabetes of the young.

Synonyms:

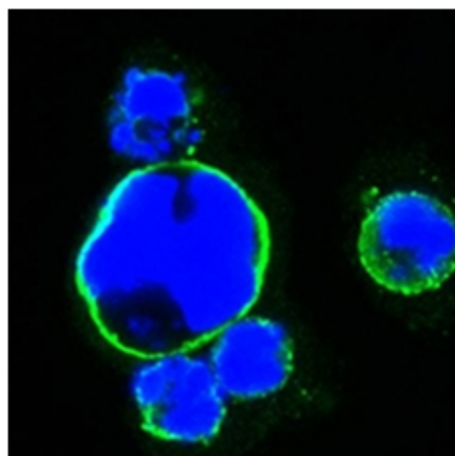
Isl-1; islet-1; ISLET1

Product images:

Western blot analysis using ISL1 mouse mAb against full-length ISL1 (aa1-349)-hlgGfc transfected HEK293 cell lysate (Lane 1).



Immunohistochemical analysis of paraffin-embedded human lung cancer (left) and cervical carcinoma (right), showing nuclear localization using ISL1 antibody Cat.-No AM06335SU-N with DAB staining.



Confocal immunofluorescence analysis of HEK293 cells transfected with full-length ISL1-hlgGfc using ISL1 antibody Cat.-No AM06335SU-N (green). Blue: DRAQ5 fluorescent DNA dye.