

## Product datasheet for **AM06329SU-N**

### TrkA (NTRK1) Mouse Monoclonal Antibody [Clone ID: 6B2]

#### Product data:

Product Type:	Primary Antibodies
Clone Name:	6B2
Applications:	IF, WB
Recommended Dilution:	<b>ELISA:</b> 1/10000. <b>Western Blot:</b> 1/500 - 1/2000. <b>Immunofluorescence:</b> 1/200 - 1/1000.
Reactivity:	Human
Host:	Mouse
Isotype:	IgG1
Clonality:	Monoclonal
Immunogen:	Purified recombinant extracellular fragment of human TrkA (aa33-423) fused with hlgGfC tag expressed in HEK293 cell line.
Specificity:	Recognizes TrkA
Formulation:	State: Ascites State: Ascitic fluid containing 0.03% Sodium Azide.
Conjugation:	Unconjugated
Storage:	Store the antibody undiluted at 2-8°C for one month or (in aliquots) at -20°C for longer. Avoid repeated freezing and thawing.
Stability:	Shelf life: one year from despatch.
Predicted Protein Size:	87.4 kDa
Gene Name:	neurotrophic receptor tyrosine kinase 1
Database Link:	<a href="#">Entrez Gene 4914 Human P04629</a>



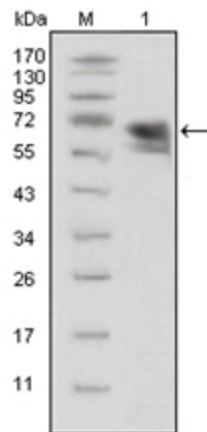
[View online »](#)

**Background:**

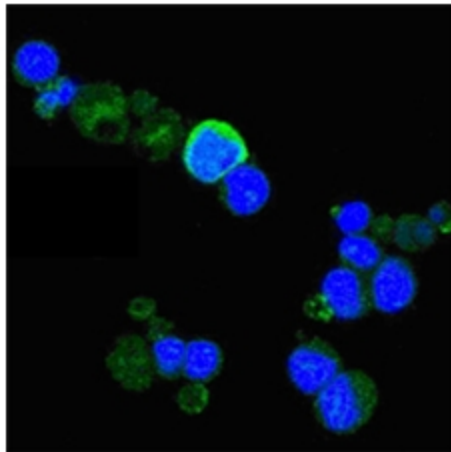
TrkA, also known as NTRK1, MTC, TRK, TRK1 is a member of the neurotrophic tyrosine kinase receptor (NTRK) family. This kinase is a membrane-bound receptor that, upon neurotrophin binding, phosphorylates itself and members of the MAPK pathway. The presence of this kinase leads to cell differentiation and may play a role in specifying sensory neuron subtypes. Mutations in this gene have been associated with congenital insensitivity to pain, anhidrosis, self-mutilating behavior, mental retardation and cancer. Alternate transcriptional splice variants of this gene have been found, but only three have been characterized to date.

**Synonyms:**

NTRK1, TRK, Trk-A

**Product images:**

Western blot analysis using TrkA antibody Cat.-No AM06329SU-N against extracellular domain of human TrkA (aa33-423).



Confocal Immunofluorescence analysis of PC-12 cells using TrkA antibody Cat.-No AM06329SU-N (green), showing membrane and cytoplasmic localization. Blue: DRAQ5 fluorescent DNA dye.