

Product datasheet for **AM06325SU-N**

Lipoprotein lipase (LPL) Mouse Monoclonal Antibody [Clone ID: 2C5]

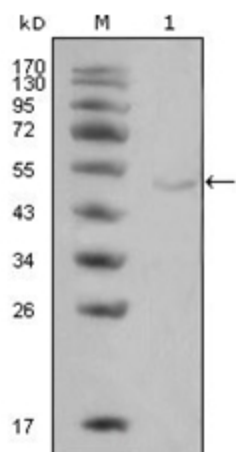
Product data:

Product Type:	Primary Antibodies
Clone Name:	2C5
Applications:	ELISA, WB
Recommended Dilution:	ELISA: 1/10000. Western Blot: 1/500 - 1/2000.
Reactivity:	Human
Host:	Mouse
Isotype:	IgG1
Clonality:	Monoclonal
Immunogen:	Purified recombinant fragment of LPL expressed in E. Coli.
Specificity:	Recognizes LPL / Lipoprotein Lipase
Formulation:	State: Ascites State: Ascitic fluid containing 0.03% Sodium Azide.
Conjugation:	Unconjugated
Storage:	Store the antibody undiluted at 2-8°C for one month or (in aliquots) at -20°C for longer. Avoid repeated freezing and thawing.
Stability:	Shelf life: one year from despatch.
Predicted Protein Size:	53.1 kDa
Gene Name:	lipoprotein lipase
Database Link:	Entrez Gene 4023 Human P06858
Background:	Lipoprotein lipase, also known as LIPD, HDLCQ11 is expressed in heart, muscle, and adipose tissue. LPL functions as a homodimer, and has the dual functions of triglyceride hydrolase and ligand/bridging factor for receptor-mediated lipoprotein uptake. Severe mutations that cause LPL deficiency result in type I hyperlipoproteinemia, while less extreme mutations in LPL are linked to many disorders of lipoprotein metabolism.
Synonyms:	LPL, LIPD, EC=3.1.1.34



[View online »](#)

Product images:



Western blot analysis using LPL antibody Cat.-No AM06325SU-N against HeLa cell lysate (1).