

Product datasheet for **AM06323SU-N**

LCN1 Mouse Monoclonal Antibody [Clone ID: 10B10]

Product data:

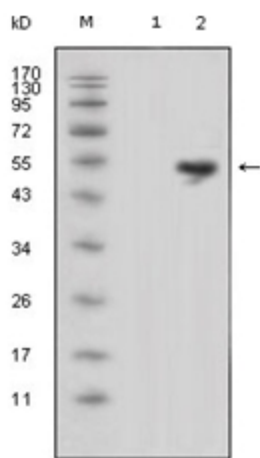
Product Type:	Primary Antibodies
Clone Name:	10B10
Applications:	ELISA, IF, IHC, WB
Recommended Dilution:	ELISA: 1/10000. Western Blot: 1/500 - 1/2000. Immunofluorescence: 1/200 - 1/1000. Immunohistochemistry on Paraffin Sections: 1/200 - 1/1000.
Reactivity:	Human
Host:	Mouse
Isotype:	IgG1
Clonality:	Monoclonal
Immunogen:	Purified recombinant fragment of LCN1 expressed in E. Coli.
Specificity:	Recognizes Lipocalin 1 (tear prealbumin).
Formulation:	State: Ascites State: Ascitic fluid containing 0.03% Sodium Azide.
Conjugation:	Unconjugated
Storage:	Store the antibody undiluted at 2-8°C for one month or (in aliquots) at -20°C for longer. Avoid repeated freezing and thawing.
Stability:	Shelf life: one year from despatch.
Predicted Protein Size:	19.2 kDa
Gene Name:	lipocalin 1
Database Link:	Entrez Gene 3933 Human P31025
Background:	Lipocalin 1 (tear prealbumin), also known as TP, PMFA, VEGP belongs to the lipocalin family. Lipocalins are a group of extracellular proteins that are able to bind lipophiles by enclosure within their structures to minimize solvent contact. This protein may bind hydrophobic ligands and inhibit cysteine proteinases. It may also play a role in taste reception and could be necessary for the concentration and delivery of sapid molecules in the gustatory system.



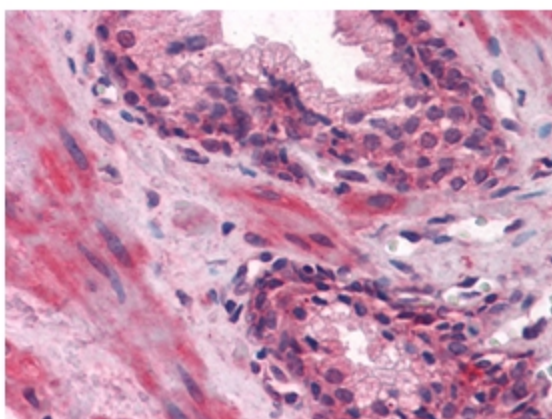
[View online »](#)

Synonyms: LCN1, VEGP, Von Ebner gland protein, VEG protein, Tear prealbumin, TP, Tear lipocalin, Tlc, Lipocalin1

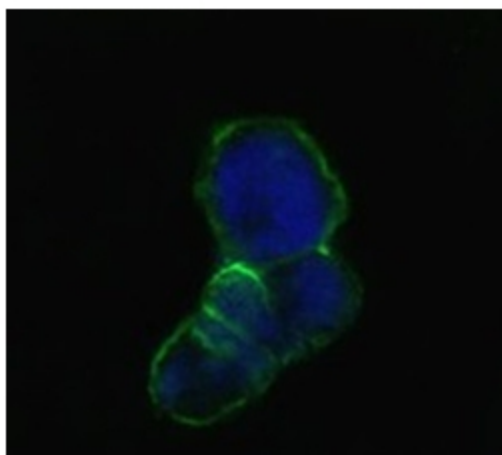
Product images:



Western blot analysis using LCN1 antibody Cat.-No AM06323SU-N against HEK293 (Lane 1) and LCN1-hlgGfc transfected HEK293 cell lysate (Lane 2).



Immunohistochemical analysis of paraffin-embedded human Prostate tissues using LCN1 antibody Cat.-No AM06323SU-N



Confocal Immunofluorescence analysis of methanol-fixed HEK293 cells transfected with LCN1-hlgGf using LCN1 antibody Cat.-No AM06323SU-N (green), showing membrane localization. Blue: DRAQ5 fluorescent DNA dye.