

Product datasheet for **AM06318SU-N**

Myosin Light Chain 2 (MYL2) Mouse Monoclonal Antibody [Clone ID: 7C9]

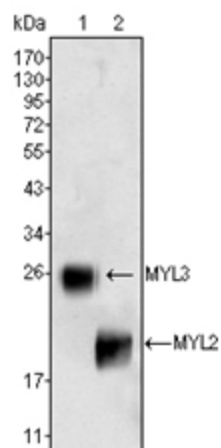
Product data:

Product Type:	Primary Antibodies
Clone Name:	7C9
Applications:	WB
Recommended Dilution:	ELISA: 1/10000. Western Blot: 1/500-1/2000. Immunohistochemistry on Paraffin Sections: 1/100.
Reactivity:	Human
Host:	Mouse
Isotype:	IgG1
Clonality:	Monoclonal
Immunogen:	Purified recombinant fragment of MYL2 expressed in E. Coli.
Specificity:	Recognizes Human Myosin light chain 2 (MYL2).
Formulation:	State: Ascites State: Ascitic fluid containing 0.03% Sodium Azide.
Conjugation:	Unconjugated
Storage:	Store undiluted at 2-8°C for one month or (in aliquots) at -20°C for longer. Avoid repeated freezing and thawing.
Stability:	Shelf life: one year from despatch.
Gene Name:	myosin light chain 2
Database Link:	Entrez Gene 4633 Human P10916
Background:	MYL2 (Myosin, light chain 2, regulatory, cardiac, slow), also known as MLC-2, MLC2v. MYL2 associated with cardiac myosin beta (or slow) heavy chain. Ca ⁺ triggers the phosphorylation of regulatory light chain that in turn triggers contraction. It is a hexamer of two heavy chains and four light chains that is predominantly expressed in adult cardiac ventricle muscle. Mutations in MYL2 are associated with mid-left ventricular chamber type hypertrophic cardiomyopathy.
Synonyms:	MLC-2v, MLC-2



[View online »](#)

Product images:



Western blot analysis using MYL3 (Lane 1) and MYL2 antibody Cat.-No AM06318SU-N (Lane 2) against Rat fetal heart tissue lysate.