

Product datasheet for **AM06316SU-N**

Cytokeratin 5 (KRT5) Mouse Monoclonal Antibody [Clone ID: 1E1]

Product data:

Product Type:	Primary Antibodies
Clone Name:	1E1
Applications:	WB
Recommended Dilution:	ELISA: 1/10000. Western Blot: 1/500 - 1/2000.
Reactivity:	Human
Host:	Mouse
Isotype:	IgG1
Clonality:	Monoclonal
Immunogen:	Purified recombinant fragment of Cytokeratin 5 expressed in E. Coli.
Specificity:	Recognizes Cytokeratin 5
Formulation:	State: Ascites State: Ascitic fluid containing 0.03% Sodium Azide.
Conjugation:	Unconjugated
Storage:	Store the antibody undiluted at 2-8°C for one month or (in aliquots) at -20°C for longer. Avoid repeated freezing and thawing.
Stability:	Shelf life: one year from despatch.
Predicted Protein Size:	62.3 kDa
Gene Name:	keratin 5
Database Link:	Entrez Gene 3852 Human P13647



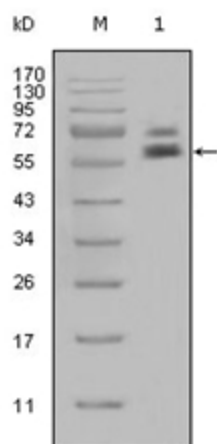
[View online »](#)

Background:

Cytokeratin 5, also known as CK5, KRT5. It is a member of the keratin gene family. Biochemically, most members of the CK family fall into one of two classes, type I (acidic polypeptides) and type II (basic polypeptides). The type II cytokeratins consist of basic or neutral proteins which are arranged in pairs of heterotypic keratin chains coexpressed during differentiation of simple and stratified epithelial tissues. This type II cytokeratin is specifically expressed in the basal layer of the epidermis with family member KRT14. The type II cytokeratins are clustered in a region of chromosome 12q12-q13. At least one member of the acidic family and one member of the basic family is expressed in all epithelial cells. Cytokeratin 5 is expressed in normal basal cells. Mutations of the Cytokeratin5 gene (KRT5) have been shown to result in the autosomal dominant disorder epidermolysis bullosa (EB). Defects in KRT5 are a cause of epidermolysis bullosa simplex.

Synonyms:

KRT5, Cytokeratin-5, Keratin-5, Keratin 5, CK5, K5

Product images:

Western blot analysis using Cytokeratin 5 antibody Cat.-No AM06316SU-N against Hela cell lysate (1).