

Product datasheet for **AM06311SU-N**

RSPO1 Mouse Monoclonal Antibody [Clone ID: 7A6]

Product data:

Product Type:	Primary Antibodies
Clone Name:	7A6
Applications:	WB
Recommended Dilution:	ELISA: 1/10000. Western Blot: 1/500 - 1/2000.
Reactivity:	Human
Host:	Mouse
Isotype:	IgG1
Clonality:	Monoclonal
Immunogen:	Purified recombinant fragment of R-spondin1 expressed in E. Coli.
Specificity:	Recognizes R-Spondin-1
Formulation:	State: Ascites State: Ascitic fluid containing 0.03% Aodium Azide.
Conjugation:	Unconjugated
Storage:	Store the antibody undiluted at 2-8°C for one month or (in aliquots) at -20°C for longer. Avoid repeated freezing and thawing.
Stability:	Shelf life: one year from despatch.
Gene Name:	R-spondin 1
Database Link:	Entrez Gene 284654 Human Q2MKA7



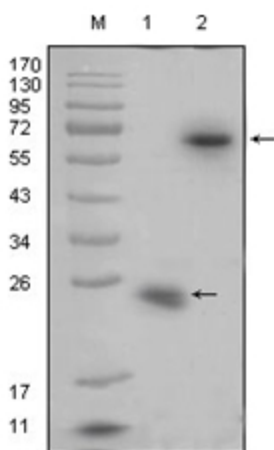
[View online »](#)

Background:

R-spondin1, also known as RSPO1, CRISTIN3, FLJ40906 is a member of the R-spondin family and a 28.9kDa secreted activator protein with two cystein-rich, furin-like domains and one thrombospondin type 1 domain. In mice, the protein induces the rapid onset of crypt cell proliferation and increases intestinal epithelial healing, providing a protective effect against chemotherapy-induced adverse effects. It is an activator of the beta-catenin signaling cascade, leading to TCF-dependent gene activation. Acts both in the canonical Wnt/beta-catenin-dependent pathway, possibly via a direct interaction with Wnt proteins, and in a Wnt-independent beta-catenin pathway through a receptor signaling pathway that may not use frizzled/LRP receptors. Acts as a ligand for frizzled FZD8 and LRP6. May negatively regulate the TGF-beta pathway. Has essential roles in ovary determination.

Synonyms:

R-spondin-1

Product images:

Western blot analysis using R-spondin1 mouse mAb against recombinant R-spondin1 protein (Lane 1) and R-spondin1 (aa21-263)-hlgGfc transfected HEK293 cell lysate (Lane 2).