

Product datasheet for **AM06309SU-N**

Apolipoprotein L 1 (APOL1) Mouse Monoclonal Antibody [Clone ID: 1D4]

Product data:

Product Type:	Primary Antibodies
Clone Name:	1D4
Applications:	WB
Recommended Dilution:	ELISA: 1/10000. Western Blot: 1/500 - 1/2000.
Reactivity:	Human
Host:	Mouse
Isotype:	IgG1
Clonality:	Monoclonal
Immunogen:	Purified recombinant fragment of APOL1 expressed in E. Coli.
Specificity:	Recognizes APOL1 (Apolipoprotein L1)
Formulation:	State: Ascites State: Ascitic fluid containing 0.03% Sodium Azide.
Conjugation:	Unconjugated
Storage:	Store the antibody undiluted at 2-8°C for one month or (in aliquots) at -20°C for longer. Avoid repeated freezing and thawing.
Stability:	Shelf life: one year from despatch.
Predicted Protein Size:	44 kDa
Gene Name:	apolipoprotein L1
Database Link:	Entrez Gene 8542 Human O14791



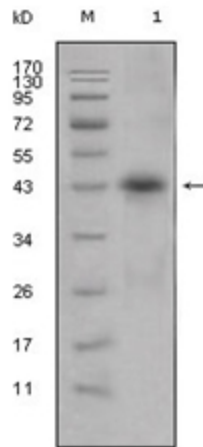
[View online »](#)

Background:

APOL1 (Apolipoprotein L1), also known as APOL, APO-L, APOL-I. It is a 395aa secreted high density lipoprotein which binds to apolipoprotein A-I. And is involved in the formation of most cholesteryl esters in plasma and also promotes efflux of cholesterol from cells. The apolipoprotein L gene family encodes six highly homologous proteins designated apoL-I to -VI. This apolipoprotein L family member may play a role in lipid exchange and transport throughout the body, as well as in reverse cholesterol transport from peripheral cells to the liver. Several different transcript variants encoding different isoforms have been found for this gene.

Synonyms:

Apolipoprotein L-I, ApoL-I

Product images:

Western blot analysis using APOL1 antibody Cat.-No AM06309SU-N against human plasma (Lane 1).