

Product datasheet for **AM06305SU-N**

CHIT1 Mouse Monoclonal Antibody [Clone ID: IBL-5/25]

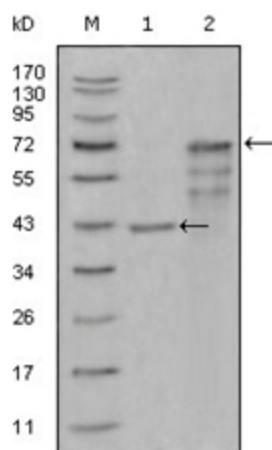
Product data:

Product Type:	Primary Antibodies
Clone Name:	IBL-5/25
Applications:	ELISA, WB
Recommended Dilution:	ELISA: 1/10000. Western Blot: 1/500 - 1/2000.
Reactivity:	Human
Host:	Mouse
Isotype:	IgG1
Clonality:	Monoclonal
Immunogen:	Purified recombinant fragment of CHIT1 (aa22-137) expressed in E. Coli.
Specificity:	Recognizes CHIT1/Chitinase 1
Formulation:	State: Ascites State: Ascitic fluid containing 0.03% Sodium Azide.
Conjugation:	Unconjugated
Storage:	Store the antibody undiluted at 2-8°C for one month or (in aliquots) at -20°C for longer. Avoid repeated freezing and thawing.
Stability:	Shelf life: one year from despatch.
Gene Name:	chitinase 1
Database Link:	Entrez Gene 1118 Human Q13231
Background:	Chitotriosidase is a 50 kDa secreted glycoprotein that belongs to glycohydrolase family # 18. It is secreted by activated human macrophages and is markedly elevated in plasma of Gaucher disease patients. The expression of chitotriosidase occurs only at a late stage of differentiation of monocytes to activated macrophages in culture. Human macrophages can synthesize a functional chitotriosidase, a highly conserved enzyme with a strongly regulated expression. This enzyme may play a role in the degradation of chitin-containing pathogens.
Synonyms:	Chitotriosidase-1, CHIT1



[View online »](#)

Product images:



Western blot analysis using CHIT1 antibody Cat.-No AM06305SU-N against truncated Trx-CHIT1 recombinant protein (Lane 1) and truncated CHIT1 (aa22-466)-hlgGfc transfected CHO-K1 cell lysate (Lane 2).