

## Product datasheet for **AM06302SU-N**

### Mammaglobin A (SCGB2A2) Mouse Monoclonal Antibody [Clone ID: 1G8D6]

#### Product data:

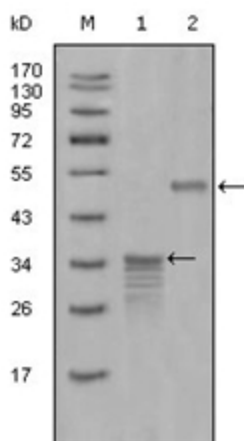
Product Type:	Primary Antibodies
Clone Name:	1G8D6
Applications:	ELISA, WB
Recommended Dilution:	<b>ELISA:</b> 1/10000. <b>Western Blot:</b> 1/500 - 1/2000.
Reactivity:	Human
Host:	Mouse
Isotype:	IgG1
Clonality:	Monoclonal
Immunogen:	Purified recombinant fragment of Mammaglobin-1 expressed in E. Coli.
Specificity:	Recognizes Mammaglobin-1
Formulation:	State: Ascites State: Ascitic fluid containing 0.03% Sodium Azide.
Conjugation:	Unconjugated
Storage:	Store the antibody undiluted at 2-8°C for one month or (in aliquots) at -20°C for longer. Avoid repeated freezing and thawing.
Stability:	Shelf life: one year from despatch.
Gene Name:	secretoglobin family 2A member 2
Database Link:	<a href="#">Entrez Gene 4250 Human Q13296</a>
Background:	Mammaglobin is a gene that is expressed almost exclusively in the normal breast epithelium and human breast cancer. It is a member of the secretoglobin gene family and forms a heterodimer with lipophilin B. It has been suggested that mammaglobin may be a useful marker for breast cancer clinical research. Studies investigating the detection of mRNA by RT PCR from circulating carcinoma cells in the peripheral blood of breast cancer patients have shown that mammaglobin is a highly specific marker and correlates with several prognostic factors, such as lymph node involvement.



[View online »](#)

**Synonyms:** Mammaglobin-A, Mammaglobin-1, Secretoglobin family 2A member 2, MGB1, UGB2, Prostatein peptide C3, Prostatic steroid-binding protein C3

**Product images:**



Western blot analysis using Mammaglobin-1 antibody Cat.-No AM06302SU-N against full-length GST- Mammaglobin-1 (Lane 1) and full-length MBP- Mammaglobin-1 (aa1-193) recombinant protein (Lane 2).