

## Product datasheet for **AM06298SU-N**

### PEG10 Mouse Monoclonal Antibody [Clone ID: 1B1C4]

#### Product data:

Product Type:	Primary Antibodies
Clone Name:	1B1C4
Applications:	IF, IHC, WB
Recommended Dilution:	<b>ELISA:</b> 1/10000. <b>Western Blot:</b> 1/500-1/2000. <b>Immunofluorescence:</b> 1/200-1/1000. <b>Immunohistochemistry on Paraffin Sections:</b> 1/200-1/1000.
Reactivity:	Human
Host:	Mouse
Isotype:	IgG1
Clonality:	Monoclonal
Immunogen:	Purified recombinant fragment of PEG10 (aa1-120) expressed in E. Coli.
Specificity:	Recognizes Paternally Expressed 10 (PEG10).
Formulation:	State: Ascites State: Ascitic fluid containing 0.03% Sodium Azide.
Conjugation:	Unconjugated
Storage:	Store the antibody undiluted at 2-8°C for one month or (in aliquots) at -20°C for longer. Avoid repeated freezing and thawing.
Stability:	Shelf life: one year from despatch.
Gene Name:	paternally expressed 10
Database Link:	<a href="#">Entrez Gene 23089 Human Q86TG7</a>



[View online »](#)

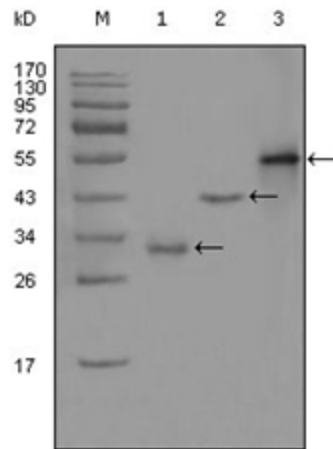
**Background:**

The PEG10 includes two overlapping reading frames of the same transcript encoding distinct isoforms. The shorter isoform has a CCHC-type zinc finger motif containing a sequence characteristic of gag proteins of most retroviruses and some retrotransposons, and it functions in part by interacting with members of the TGF-beta receptor family. The longer isoform has the active-site DSG consensus sequence of the protease domain of pol proteins. The longer isoform is the result of -1 translational frameshifting that is also seen in some retroviruses. Expression of these two isoforms only comes from the paternal allele due to imprinting. Increased gene expression (as observed by an increase in mRNA levels) is associated with hepatocellular carcinomas.

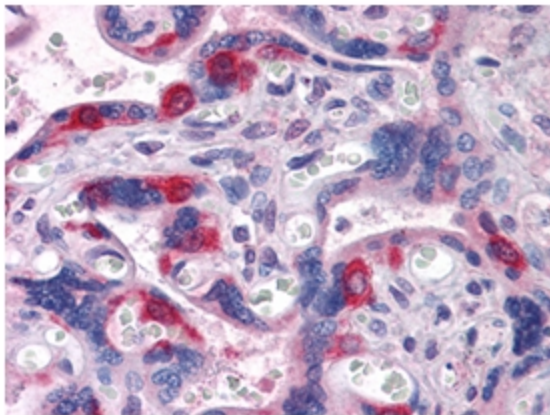
**Synonyms:**

EDR, KIAA1051, MAR2, MART2, MEF3L1, MEF3-like protein 1, RGAG3

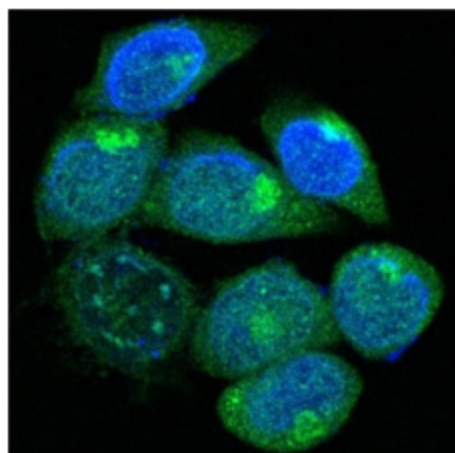
**Product images:**



Western blot analysis using PEG10 antibody Cat.-No AM06298SU-N against truncated Trx-PEG10 recombinant protein (Lane 1), truncated GST-PEG10 (aa1-120) recombinant protein (Lane 2) and full-length PEG10 (aa1-325)-hIgGFc transfected CHO-K1 cell lysate (Lane 3).



Immunohistochemical analysis of paraffin-embedded human Placenta tissues using PEG10 antibody Cat.-No AM06298SU-N



Confocal Immunofluorescence analysis of methanol-fixed HepG2 cells using PEG10 antibody Cat.-No AM06298SU-N (green), showing cytoplasmic localization. Blue: DRAQ5 fluorescent DNA dye.