

## Product datasheet for **AM06297SU-N**

### Lipoprotein a (LPA) Mouse Monoclonal Antibody [Clone ID: 8F6A9]

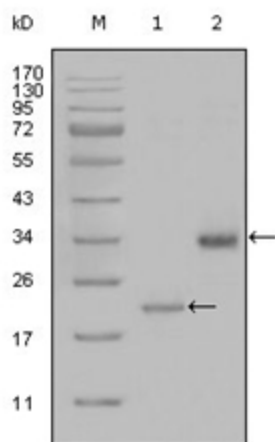
#### Product data:

Product Type:	Primary Antibodies
Clone Name:	8F6A9
Applications:	ELISA, IHC, WB
Recommended Dilution:	<b>ELISA:</b> 1/10000. <b>Western Blot:</b> 1/500 - 1/2000. <b>Immunohistochemistry on Paraffin Sections:</b> 1/200 - 1/1000.
Reactivity:	Human
Host:	Mouse
Isotype:	IgG1
Clonality:	Monoclonal
Immunogen:	Purified recombinant fragment of LPA (1823-2013 aa) expressed in E. Coli
Specificity:	Recognizes LPA, Lipoprotein, Lp(a)
Formulation:	State: Ascites State: Ascitic fluid containing 0.03% Sodium Azide.
Conjugation:	Unconjugated
Storage:	Store the antibody undiluted at 2-8°C for one month or (in aliquots) at -20°C for longer. Avoid repeated freezing and thawing.
Stability:	Shelf life: one year from despatch.
Gene Name:	lipoprotein(a)
Database Link:	<a href="#">Entrez Gene 4018 Human P08519</a>
Background:	Apo(a) is the main constituent of lipoprotein(a) (lp(a)). It has serine proteinase activity and is able of autoproteolysis. Inhibits tissue-type plasminogen activator 1. Lp(a) may be a ligand for megalin/gp 330. Apo(a) is known to be proteolytically cleaved, leading to the formation of the so-called mini-lp(a). Apo(a) fragments accumulate in atherosclerotic lesions, where they may promote thrombogenesis. O-glycosylation may limit the extent of proteolytic fragmentation.
Synonyms:	Apo(a), LPA

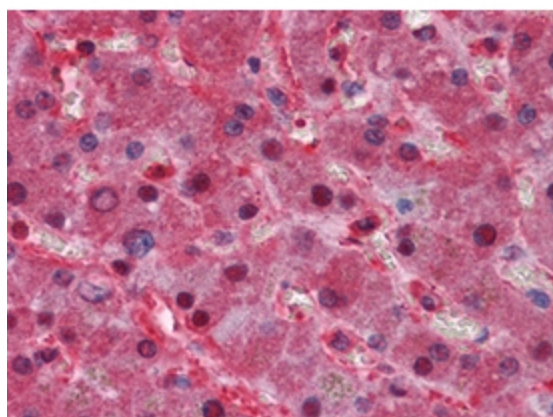


[View online »](#)

## Product images:



Western blot analysis using LPA antibody Cat.-No AM06297SU-N against truncated LPA-His recombinant protein (Lane 1) and truncated Trx-LPA (aa4330-4521) recombinant protein (Lane 2).



Immunohistochemical analysis of paraffin-embedded human Liver tissues using LPA antibody Cat.-No AM06297SU-N