

Product datasheet for **AM06295SU-N**

Eph receptor A5 (EPHA5) Mouse Monoclonal Antibody [Clone ID: 8B10B1]

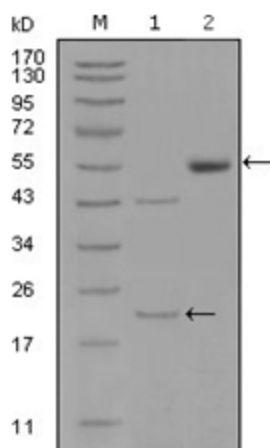
Product data:

Product Type:	Primary Antibodies
Clone Name:	8B10B1
Applications:	ELISA, WB
Recommended Dilution:	ELISA: 1/10000. Western Blot: 1/500 - 1/2000.
Reactivity:	Human
Host:	Mouse
Isotype:	IgG1
Clonality:	Monoclonal
Immunogen:	Purified recombinant fragment of EphA5 (aa620-774) expressed in E. Coli.
Specificity:	Recognizes EphA5/EPH receptor A5.
Formulation:	State: Ascites State: Ascitic fluid containing 0.03% Sodium Azide.
Conjugation:	Unconjugated
Storage:	Store the antibody undiluted at 2-8°C for one month or (in aliquots) at -20°C for longer. Avoid repeated freezing and thawing.
Stability:	Shelf life: one year from despatch.
Gene Name:	EPH receptor A5
Database Link:	Entrez Gene 2044 Human P54756
Background:	This gene belongs to the ephrin receptor subfamily of the protein-tyrosine kinase family. EPH and EPH-related receptors have been implicated in mediating developmental events, particularly in the nervous system. Receptors in the EPH subfamily typically have a single kinase domain and an extracellular region containing a Cys-rich domain and 2 fibronectin type III repeats. The ephrin receptors are divided into 2 groups based on the similarity of their extracellular domain sequences and their affinities for binding ephrin-A and ephrin-B ligands.
Synonyms:	EHK1, HEK7, Ephrin type-A receptor 5



[View online »](#)

Product images:



Western blot analysis using EPHA5 mouse mAb against truncated EPHA5-His recombinant protein (1) and truncated EPHA5 (aa620-774)-hlgGFc transfected CHO-K1 cell lysate (2).