

## Product datasheet for **AM06294SU-N**

### SKP2 Mouse Monoclonal Antibody [Clone ID: 6G9D10]

#### Product data:

Product Type:	Primary Antibodies
Clone Name:	6G9D10
Applications:	WB
Recommended Dilution:	<b>ELISA:</b> 1/10000. <b>Western Blot:</b> 1/500 - 1/2000.
Reactivity:	Human
Host:	Mouse
Isotype:	IgG1
Clonality:	Monoclonal
Immunogen:	Purified recombinant fragment of SKP2 (aa1-130) expressed in E. Coli.
Specificity:	Recognizes SKP2/S-phase kinase-associated protein 2 (p45).
Formulation:	State: Ascites State: Ascitic fluid containing 0.03% Sodium Azide.
Conjugation:	Unconjugated
Storage:	Store the antibody undiluted at 2-8°C for one month or (in aliquots) at -20°C for longer. Avoid repeated freezing and thawing.
Stability:	Shelf life: one year from despatch.
Gene Name:	S-phase kinase-associated protein 2, E3 ubiquitin protein ligase
Database Link:	<a href="#">Entrez Gene 6502 Human Q13309</a>



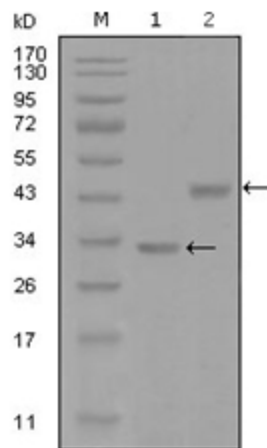
[View online »](#)

**Background:**

This gene encodes a member of the F-box protein family which is characterized by an approximately 40 amino acid motif, the F-box. The F-box proteins constitute one of the four subunits of ubiquitin protein ligase complex called SCFs (SKP1-cullin-F-box), which function in phosphorylation-dependent ubiquitination. The F-box proteins are divided into 3 classes: Fbws containing WD-40 domains, Fbls containing leucine-rich repeats, and Fbxs containing either different protein-protein interaction modules or no recognizable motifs. The protein encoded by this gene belongs to the Fbls class; in addition to an F-box, this protein contains 10 tandem leucine-rich repeats. This protein is an essential element of the cyclin A-CDK2 S-phase kinase. It specifically recognizes phosphorylated cyclin-dependent kinase inhibitor 1B (CDKN1B, also referred to as p27 or KIP1) predominantly in S phase and interacts with S-phase kinase-associated protein 1 (SKP1 or p19). In addition, this gene is established as a protooncogene causally involved in the pathogenesis of lymphomas. Alternative splicing of this gene generates 2 transcript variants encoding different isoforms.

**Synonyms:**

FBL1; FBXL1; FLB1; MGC1366; p45skp2

**Product images:**

Western blot analysis using SKP2 mouse mAb against truncated Trx-SKP2 recombinant protein (1) and GST-SKP2 (aa1-130) recombinant protein (2).