

Product datasheet for **AM06292SU-N**

Eph receptor A6 (EPHA6) Mouse Monoclonal Antibody [Clone ID: 3D5B10]

Product data:

Product Type:	Primary Antibodies
Clone Name:	3D5B10
Applications:	WB
Recommended Dilution:	ELISA: 1/10000. Western Blot: 1/500 - 1/2000.
Reactivity:	Human
Host:	Mouse
Isotype:	IgG1
Clonality:	Monoclonal
Immunogen:	Purified recombinant fragment of EphA6 (aa695-795) expressed in E. Coli.
Specificity:	Recognizes EphA6/EPH receptor A6.
Formulation:	State: Ascites State: Ascitic fluid containing 0.03% Sodium Azide.
Conjugation:	Unconjugated
Storage:	Store the antibody undiluted at 2-8°C for one month or (in aliquots) at -20°C for longer. Avoid repeated freezing and thawing.
Stability:	Shelf life: one year from despatch.
Gene Name:	EPH receptor A6
Database Link:	Entrez Gene 285220 Human Q9UF33



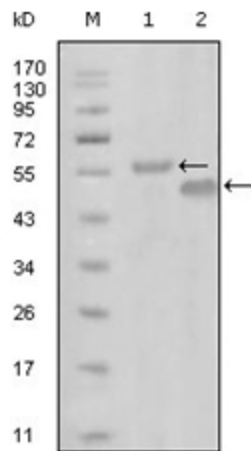
[View online »](#)

Background:

The Eph subfamily represents the largest group of receptor protein tyrosine kinases identified to date. While the biological activities of these receptors have yet to be determined, there is increasing evidence that they are involved in central nervous system function and in development. The Eph subfamily receptors of human origin (and their murine/avian homologs) include EphA1(Eph), EphA2 (Eck), EphA3 (Hek4), EphA4 (Hek8), EphA5 (Hek7), EphA6 (Hek12),EphA7 (Hek11/MDK1), EphA8 (Hek3), EphB1 (Hek6), EphB2 (Hek5), EphB3(Cek10, Hek2), EphB4 (Htk), EphB5 (Hek9) and EphB6 (Mep). Ligands for Eph receptors include ephrin-A4 (LERK-4) which binds EphA3 and EphB1. Ephrin-A2(ELF-1) has been described as the ligand for EphA4, ephrin-A3 (Ehk1-L) as the ligand for EphA5 and ephrin-B2 (Htk-L) as the ligand for EphB4 (Htk).

Synonyms:

Ephrin type-A receptor 6, EPH homology kinase 2, Ehk-2, Ehk2

Product images:


Western blot analysis using EphA6 antibody Cat.-No AM06292SU-N against truncated MBP-EphA6 recombinant protein (Lane 1) and truncated GST-EphA6 (aa695-795) recombinant protein (Lane 2).