

Product datasheet for **AM06288SU-N**

Estrogen Receptor 1 (ESR1) Mouse Monoclonal Antibody [Clone ID: 2G112B3]

Product data:

Product Type:	Primary Antibodies
Clone Name:	2G112B3
Applications:	WB
Recommended Dilution:	ELISA: 1/10000. Western Blot: 1/500 - 1/2000.
Reactivity:	Human
Host:	Mouse
Isotype:	IgG1
Clonality:	Monoclonal
Immunogen:	Synthetic peptide KLH conjugated corresponding to amino acids (SLQKYYITGEAEGFPATVc) of Human ESR1
Specificity:	Recognizes Estrogen receptor 1 (ESR1).
Formulation:	State: Ascites State: Ascitic fluid containing 0.03% Sodium Azide.
Conjugation:	Unconjugated
Storage:	Store the antibody undiluted at 2-8°C for one month or (in aliquots) at -20°C for longer. Avoid repeated freezing and thawing.
Stability:	Shelf life: one year from despatch.
Gene Name:	estrogen receptor 1
Database Link:	Entrez Gene 2099 Human P03372



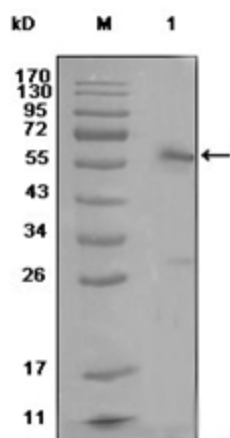
[View online »](#)

Background:

This gene encodes an estrogen receptor, a ligand-activated transcription factor composed of several domains important for hormone binding, DNA binding, and activation of transcription. The protein localizes to the nucleus where it may form a homodimer or a heterodimer with estrogen receptor 2. Estrogen and its receptors are essential for sexual development and reproductive function, but also play a role in other tissues such as bone. Estrogen receptors are also involved in pathological processes including breast cancer, endometrial cancer, and osteoporosis. Alternative splicing results in several transcript variants, which differ in their 5' UTRs and use different promoters.

Synonyms:

ER alpha, Estradiol receptor, ESR1, ESR, NR3A1

Product images:

Western blot analysis using ESR1 antibody Cat.-No AM06288SU-N against MCF-7 cell lysate (Lane 1)